

Product range

Order code	Description
zc-pir-st-1sw-r	Standalone smart PIR sensor
zc-pir-st-1sw-r-blk	Standalone smart PIR black sensor

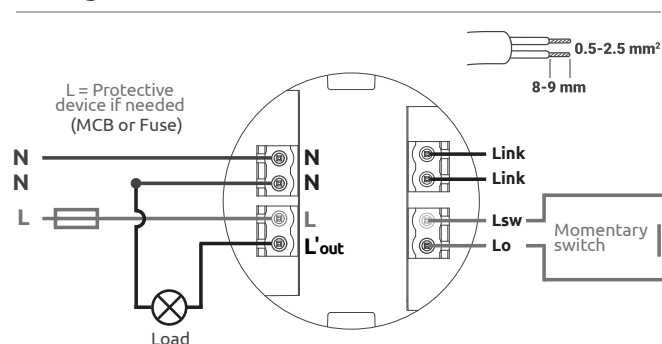
Specifications

Supply	220 - 240 V ~50 Hz
Supply current	< 0.020 A
Relay output (-r models)	6 A resistive ⚡
Lens	Fresnel
Sensors	PIR, IR, lux
IR	38 kHz
Wiring	2.5 mm ² cable
Operating temperature	0 - 35°C
Material	PC (body)
Ingress protection	IP54 (front-face only) IP65 (with surface or wall mount kit)

Accessory range

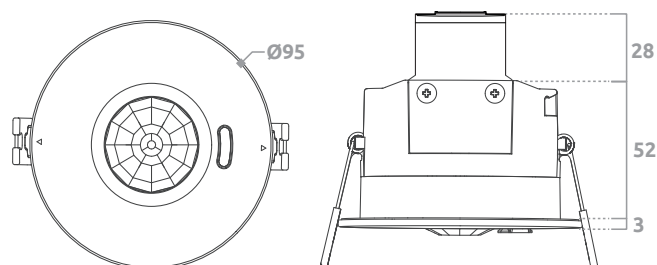
Order code	Description
zc-smart-wall-kit	Smart sensor wall mount kit
zc-smart-sm-kit	Smart sensor surface mount kit, for surface, rod, conduit mount
zc-rodmount-wht	Rod mount kit, white, for with Smart sensor surface mount kit
zc-ir-ctrl-com	Hand-held infrared control and commissioning unit

Wiring



Dimensions

Mounting (kits sold separately)	Recessed (cut-out min Ø83 mm)
	Wall mount kit (mounting centres 85 mm)
	Surface mount kit
	Rod mount kit
	Conduit mount kit (mounting centres 50-60 mm)
Dimensions	Ø95 / 55 mm



Safety information

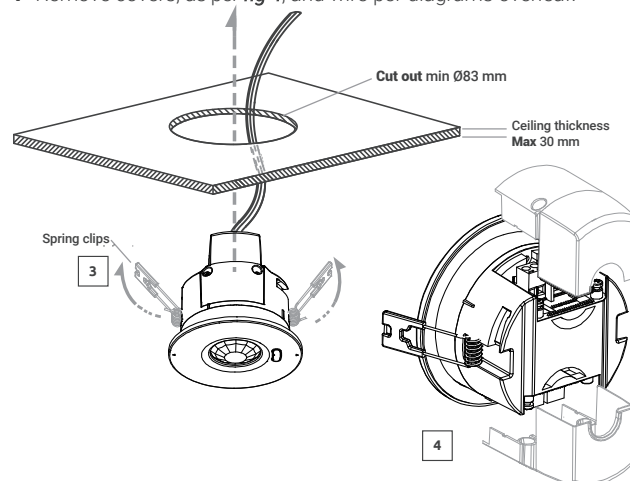
- This product must only be installed by a licensed electrician.
- Before commencing installation turn off and isolate the electrical supply.
- There are no user serviceable parts, attempting to service any part of the product will void the warranty
- As the installer, it is your responsibility to ensure you comply to all relevant building and safety codes. Refer to application standards for the relevant rules.
- When the installation is complete, leave this manual with the building's owner for future reference.

Installation

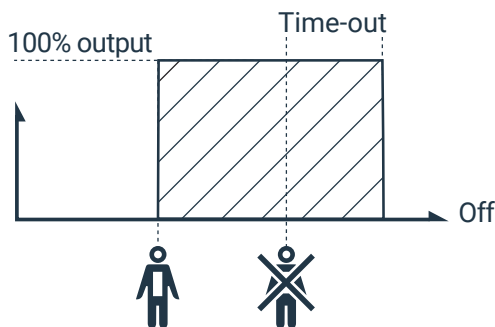
Remove the product from the box and inspect it for any damage. If you believe the product to be damaged or otherwise unsound, **do not** install the product. Please return it to the place of purchase for replacement.

If the product is satisfactory, proceed with the installation:

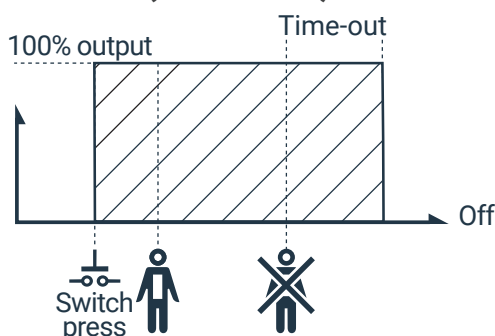
- 1 Choose a location considering the conditions listed in the **detection pattern** section.
- 2 Drill mounting hole in desired position using 83 mm hole saw.
- 3 Push the spring clips in as per **fig 3**. Insert sensor into the desired position and the spring clips will automatically release, ensuring that the sensor is secure and flush up against the ceiling.
- 4 Remove covers, as per **fig 4**, and wire per diagrams overleaf.



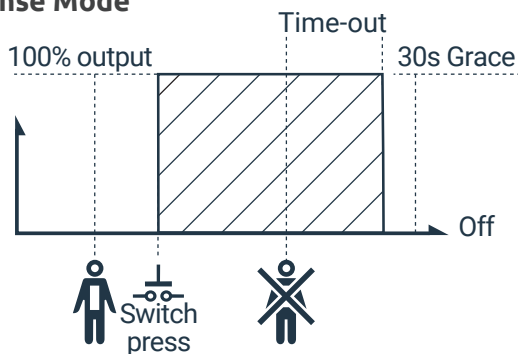
Presense Mode



Presense Mode (With Switch)



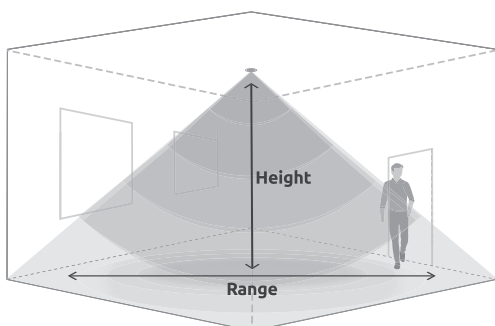
Absense Mode



Detection pattern

Mounting height 2 - 4 m **Range ø** 8 m (mounted at 3.0 m)

- The units detection range may alter with changes in ambient temperature.
- Position sensor so that movement occurs across the scan area. Detection range will be reduced when walking directly towards or away from the sensor.
- Do not direct sensor at reflective surfaces or variable heat sources.
- Do not aim sensor directly at the sun, this may cause damage to the PIR sensor.
- When in Absence Mode the product will have a 30 second grace period after the light turns off, where a user may re-trigger the sensor.
- Green LED will flash during detection.
- Red LED will flash on successfully receiving an IR command.



Programming & default standalone configuration

Sensor mode Presence mode. The sensor will automatically turn lights on when movement is detected.

Sensor idle-time 14 minutes after the last presence was detected

Refer to IR commissioning, [zc-ir-ctrl-com](#), datasheet for custom programming via IR. **Note:** [zc-ir-ctrl-com](#) is sold separately.

Remote Control description



Symbol	Function	Description
	On	Switches the luminaire on.
	Off	Switches the luminaire off.

Lux

	Set lux level	When this mode is active, the user may use the up and down arrows to select 5 predetermined lux levels
	Set dusk level	Sets dusk level from current light level. The luminaire will turn on if light level is less than dusk level. while the sensor is on and the ambient lighting becomes too bright the sensor will turn itself off after 10 minutes (even if there is PIR activity)The sensitivity can be adjusted by using the up / down arrows. (While Yellow LED is flashing)
	Disable lux/dusk	Disables lux/dusk mode.

Wireless

	Walk test	Initiates a 3 Minutes walktest The walk test is indicated by a blue flashing LED and can be stopped by pressing off
	Reset mode	Resets product to defaults

Sensor

	Absence mode	Absence mode activated. The switch must be turned on when someone enters a room, but the sensor detects when the room is vacated, switching off the lights automatically. The sensitivity can be adjusted with the step up and step down arrows (While white LED is flashing)
	Presence mode	Presence mode activated. The sensor will automatically turn lights on when movement is detected.(Default) The sensitivity can be adjusted with the step up and step down arrows (While white LED is flashing)
	Disable PIR	Disables the PIR sensor.

General settings

	Reset all	A complete factory reset, clears all settings, including standalone mode settings
--	------------------	---

Symbol

	Main Timer	The main timer the period of time for the product to remain on.
	Dwell Timer	When entering the dwell timer mode, the product will flash once, (Infinite Timer is not supported)