



EMERGENCY CATALOGUE

2025 H1







RELIABILITY WHEN IT COUNTS

Ektor is a star of the Emergency Lighting Industry. Founded in 2004, it was the first to use LED exits, introduced the first DALI range in 2006, achieved the first DALI-2 certified emergency exit, and the first to build wireless connectivity on IEC 62386-104.

With so many 'firsts' it's no surprise Ektor is at the forefront of compliance, design and testing.

Designed in Australia for international conditions, Ektor maintains complete production control throughout the entire manufacturing process.

zencontrol

zencontrol is the parent company of Ektor and aims to deliver a wide range of reliable products at an affordable price.

zencontrol invests heavily in research and testing, with stringent internal due diligence and compliance, and safety testing carried out by third parties.

IF IT DOESN'T MEET OUR HIGH STANDARDS FIRST, IT'S BACK TO THE DRAWING BOARD



LYNK 6

COMPLIANCE 10

EXIT SIGNS 12

Razor

Razor.....	14
RazorLING.....	16
Razor SM.....	18
Razor SM Track.....	20
Razor SM Pendant.....	22

Boxit

Boxit Slim.....	24
Boxit IP65.....	26
Boxit Jumbo IP65.....	28

Mercury

Mercury.....	30
Mercury Weatherproof Case.....	32
Mercury Jumbo.....	34

Alectis

Alectis IP65.....	36
-------------------	----

LED FIRE 38

Slimfire

Slimfire.....	40
Slimfire Track.....	42

Ledfire Surface Mount IP65

Ledfire Surface Mount IP65.....	44
---------------------------------	----

Ledfire

Ledfire.....	46
--------------	----

Ledfire Surface Mount

Ledfire Surface Mount.....	48
----------------------------	----

Dome

Dome.....	50
-----------	----

DUO 54

Duo

Duo.....	54
----------	----

TWINSPOOT 56

Twinspot

Twinspot Pro HP.....	56
----------------------	----

QUADRO 58

Quadro

Quadro Pro IP65.....	60
----------------------	----

CONTROLLERS 62

Emergency Timer

Emergency Timer.....	62
----------------------	----

AWAC-2

AWAC-2.....	64
-------------	----

Lynk Gateway

Lynk Gateway.....	66
-------------------	----

BATTERY 68

ACCESSORIES 69

STATUS INDICATORS 71

LYNK

WIRELESS CONTROL WITHOUT COMPLICATION OR MESS

Help meet regulatory compliance with **Lynk**, Ektor's wireless test and monitoring solution.

Simple and easy to use, the **Lynk Wireless Solution** reduces the substantial ongoing maintenance and testing costs required for emergency lighting compliance.

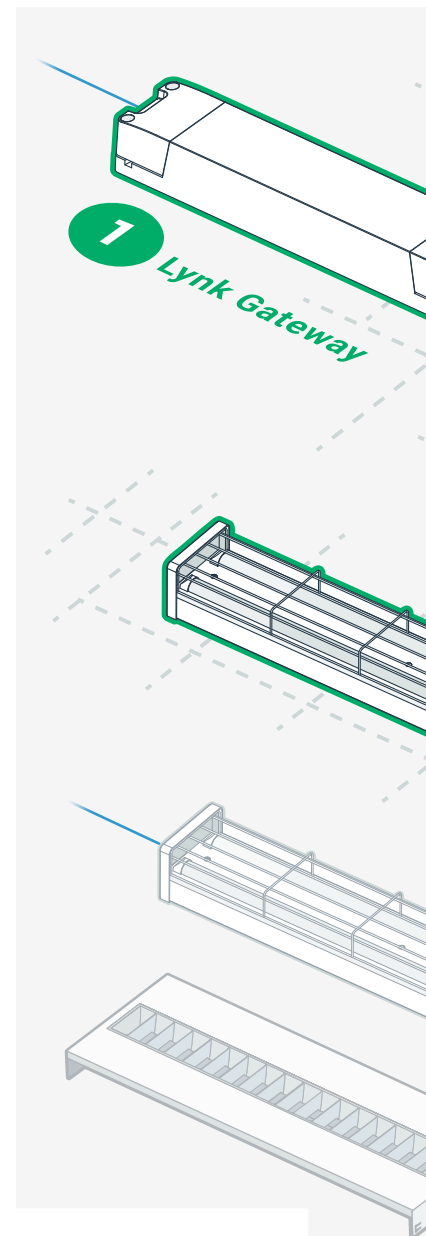
THE BEST WIRELESS EMERGENCY SOLUTION

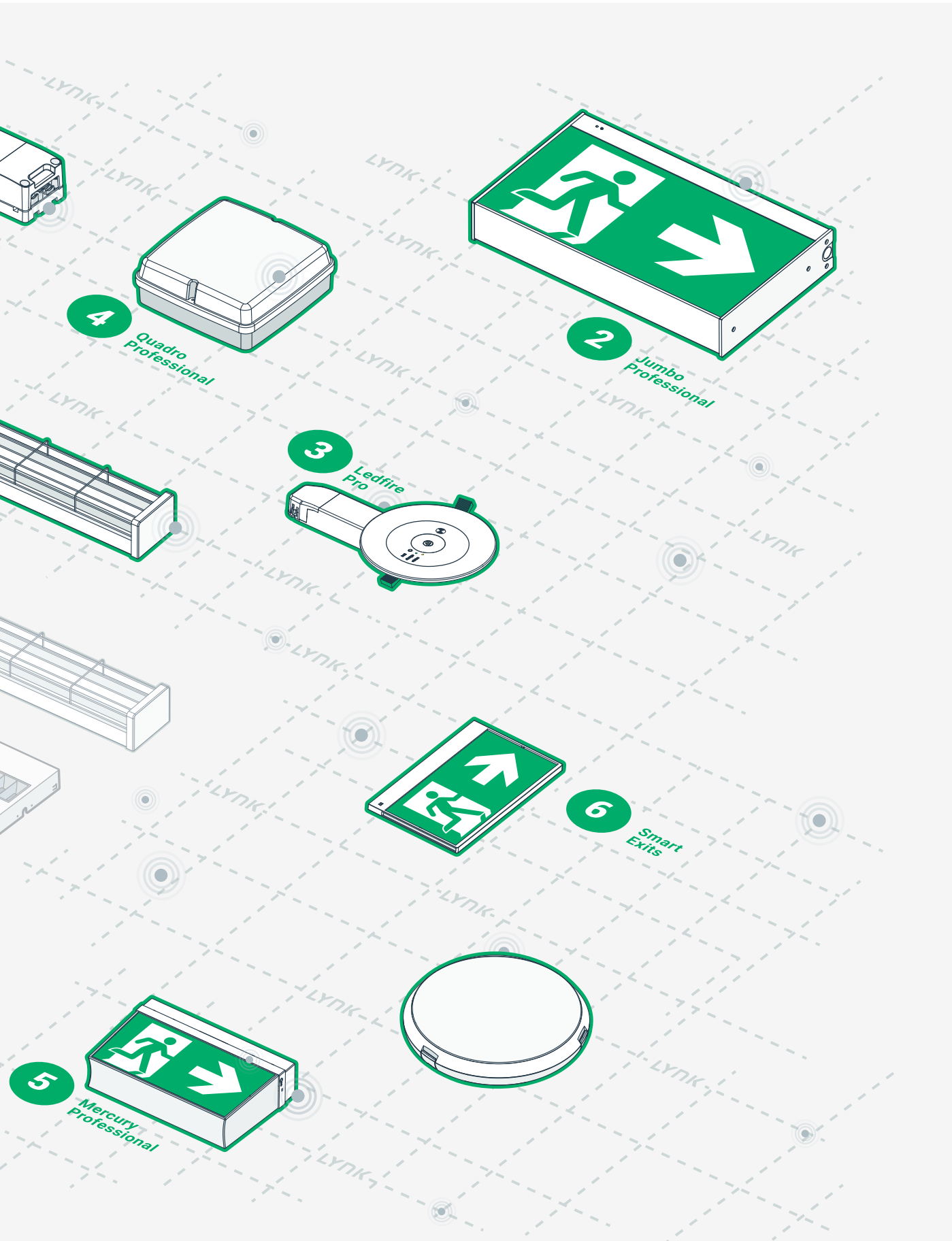
Lynk's sophisticated mesh connectivity exhibits real-time reporting, with expansion capacity across wired and wireless networks.

Behind a simple, easy-to-use interface, a powerful, self-linking, self-healing solution resides. Providing ultra-fast wireless connectivity, **Lynk** has no need for additional cables or wires, making it easy to deploy or retrofit.

Why Lynk?

- Built on DALI+ technology allowing for open source connectivity
- Easy to install with no additional wires or cables
- Suits any size installation
- Intelligent meshing technology with a powerful, self-linking and self-healing system
- Protected cloud-controlled platform allowing managed multi-user and multi-tenancy access controls
- Real-time reporting with expansion capacity across wired and wireless networks
- Built on IEC62386-104 - the only IEC standard for wireless lighting control





LYNK

REGULATORY COMPLIANCE

Save money and help to achieve building compliance with the Lync Wireless Solution.

Lync is designed to integrate and work with the zencontrol cloud platform, a system tested and certified to IEC62034 by TÜV Rheinland.

This additional testing ensures it meets the requirements of a safe and reliable monitoring system.



IEC62034 by TÜV-SÜD

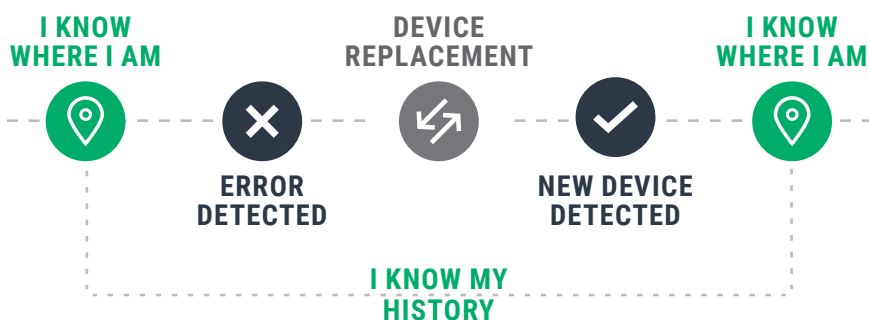


zencontrol system

TEST MANAGEMENT & TRACEABILITY

Ektor emergency testing provides a full test management solution. Instead of tracking and testing individual emergency devices, the **Lync** system is **based on the location of each unit**. With this method, the addition, replacement or removal of emergency devices maintains a full, 'through-life' traceability.

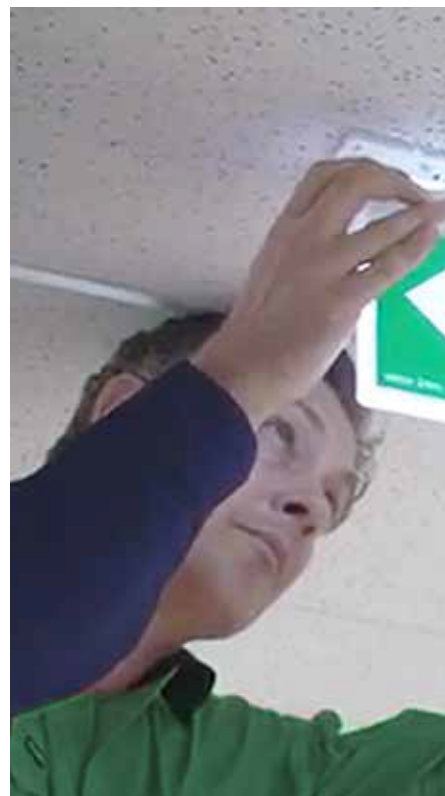
This test management system eliminates the issue of devices being removed from the network without due process. For each test session, all changes, repairs and results are tracked and reported together to provide full test details.



THREAD, WIRELESS MESH CONNECTIVITY

Lync emergency products are equipped with **state-of-the-art wireless meshing technology**. This connects nearby devices, creating a network for control and reporting.

The self-healing mesh makes **Lync** easy to deploy or retrofit, as the emergency luminaries require no additional wire. The Bluetooth commissioning interface provides installers a quick and easy connection to the device, making configuration simple.





**AUTOMATIC BACKUP
OF TEST RESULTS**

For Site Managers, compliance is improved and liability is reduced with the zencontrol cloud platform. Integrated with *Lynk*, this solution automatically backs up and stores all test results and maintenance data off-site.

**DEVICE
REPLACEMENT**

**HISTORY STORED
IN THE CLOUD**

COMPLIANCE

Through design, testing, quality systems, and representation, Ektor proves its ongoing commitment to compliance and reliability.

THIRD-PARTY TESTING

Ektor third-party testing is carried out by NATA certified test laboratories (The National Association of Testing Authorities) and ILAC MRA laboratory accredited bodies.

Testing laboratories with an approved scope and certification from NATA and ILAC MRA produce test reports with either the NATA or ILAC MRA symbol. This official stamp is critical to ensure all tests have been performed correctly.

Overseas testing laboratories, with approved scope, who are authorised signatories to the ILAC mutual recognition arrangement (MRA), carry certification from their respective national agency.

Examples of valid certified reports are detailed below:

- Australia – NATA
- Australia/New Zealand – JAS-NAS
- China – CNAS
- Japan – JAB
- Germany – DakkS

QUALITY SYSTEM

Reliability, certification, procedure.

A product carrying safety certification does not guarantee the product supplied to market is safe. Changes in the supply chain, in-house and on-line testing, and other variables, all need to be managed to ensure a consistently safe product.

Our systems, standards and procedures will deliver consistently safe, reliable, and repeatedly positive and proven outcomes in manufacturing.



AUSTRALIAN OWNED

Ektor's emergency products are manufactured in Australian owned and operated factories, certified and audited to ISO9001:2015 and ISO14001:2015 and are Sedex registered. Quality and reliability are of the highest importance, demonstrated to our customers time and time again.

FULL-CYCLE TESTING

Every range in the Ektor suite is subject to a full-cycle test before being packed and shipped. This rigorous process can take up to 32 hours and includes a complete charge, discharge and re-charge, ensuring products meet the requirements of our customers and our environment.

DESIGN LIFE

Warranties form our guarantee and the assurance we will stand behind our products, but more important than a product warranty is its design life. Customers pay significantly when the warranty of the product does not reflect the design life. A reduced design life results in more replacements and costs through the life of the product, regardless of the warranty period. It is always best practice to consider the product design life to ensure the lowest total cost of ownership

Design life criteria takes into consideration the requirements and performance needs of the product type. The design life of each Ektor product is calculated at its maximum rated ambient temperature for a true representation.

To achieve the highest design life with all Ektor products we use only quality materials and manufacture to endure the harshest of operating conditions. The size and rating of all components, including the capacitors, are de-rated and sized to provide the longest possible design life. All LEDs, batteries, and the battery capacity are carefully considered so products meet the rated duration throughout their life.

Our expertise in battery technology and degradation allows us to design Ektor products with the longest possible battery life and lowest cost of ownership.



2023-11-January to June

Our range of exits come in a variety of styles, sizes and mounting options. The Razor (pictured) is available in standard white or black. Its quality design ensures maximum luminance while reducing glare, external light reflection and unevenness.

EXIT SIGNS

FEATURES



EXCELLENT LUMINANCE

A quality design ensures maximum luminance while reducing glare, external light reflection and unevenness.



DECALS INCLUDED

Decals are included and can be mounted on both sides. They can also be purchased separately as an accessory.



LITHIUM BATTERIES

All Ektor exit signs use quality Lithium LiFePO₄ batteries. These are environmentally friendly and allow for maximum charging efficiency.

OVERVIEW

	MOUNTING TYPE				
	Ceiling	Wall	Recessed	Suspended	Rod
Boxit	✓	✓		✓	✓**
Jumbo	✓	✓		✓	
Mercury	✓	✓		✓	✓**
Razor	✓	✓	✓	✓*	✓**
Razor SM	✓	✓		✓*	✓*
Alectis		✓	✓**		

* Available on selected models

** With accessory

RAZOR



LYNK



2025 H1 January to June

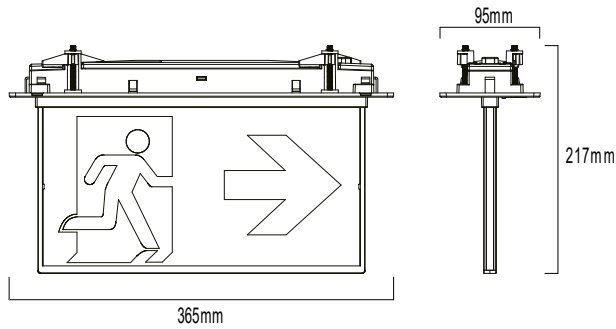
PRODUCT RANGE (WHITE)

ORDER CODE	PRODUCT NUMBER	SKU
EK-RAZOR-ST Razor Recessed Mount Exit Emergency Sign IP20 3 Hours 30m Self Test White ISO Legend Kit Included Left, Right, Up, Down	6971103536175	53617
EK-RAZOR-DA Razor Recessed Mount Exit Emergency Sign IP20 3 Hours 30m DALI White ISO Legend Kit Included Left, Right, Up, Down	6971103536199	53619
EK-RAZOR-LK Razor Recessed Mount Exit Emergency Sign IP20 3 Hours 30m Wireless Lync White ISO Legend Kit Included Left, Right, Up, Down	6971103536212	53621

PRODUCT RANGE (BLACK)

ORDER CODE	PRODUCT NUMBER	SKU
EK-RAZOR-B-ST Razor Recessed Mount Exit Emergency Sign IP20 3 Hours 30m Self Test ISO Legend Kit Included Left, Right, Up, Down	6971103536182	53618
EK-RAZOR-B-DA Razor Recessed Mount Exit Emergency Sign IP20 3 Hours 30m DALI ISO Legend Kit Included Left, Right, Up, Down	6971103536205	53620
EK-RAZOR-B-LK Razor Recessed Mount Exit Emergency Sign IP20 3 Hours 30m wireless Lync ISO Legend Kit Included Left, Right, Up, Down	6971103536229	53622

LINE DRAWINGS



MECHANICAL

Body Material	Polycarbonate
Fitting Colour	White/Blcak
Mounting Type	Recessed mount
IP Rating	IP20

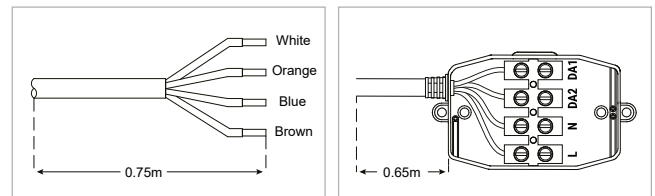
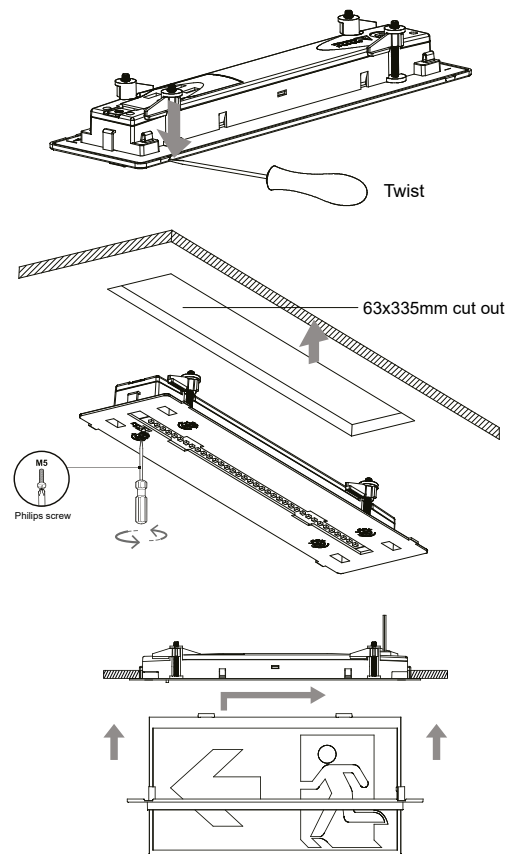
ELECTRICAL

Voltage	220-240V~
I _{in}	< 0.03A
Frequency	50/60Hz
Ambient Temperature	0-40°C
Class	II
Emergency Duration	180min
Battery Code	zc-batt-1A1-ACA
Battery Type	LiFePO ₄ 3.2V 1500mAh 4.8Wh
Battery Supply Current	180mA
Charging Time	24h
Charging Operation	Multi state
Charging Type	CC / CV
Battery service life	5 Years
Viewing Distance	30m
Wiring	4 Core Free end
CCT	6500k
Maintained max power consumption	2.8W
Maintained average power consumption	2.3W
L70(hours) >	60000h

RELEVANT STANDARDS

-	IEC 60598-1
-	IEC 60598-2-22
-	BS 5266-1
-	EN 62034
-	IEC 62386
-	EN 1838
-	ISO 3864 Part 1+3
-	ISO 7010

DIMENSIONS



RAZORLING



LYNK



2025 H1 January to June

PRODUCT RANGE (WHITE)

ORDER CODE

PRODUCT NUMBER

SKU

EK-RAZORLING-ST

Razor Recessed Mount Exit Emergency Sign IP20 3 Hours 20m Self Test White ISO Legend Kit Included Left, Right, Up, Down

6971103530739

53073

EK-RAZORLING-DA

Razor Recessed Mount Exit Emergency Sign IP20 3 Hours 20m DALI White ISO Legend Kit Included Left, Right, Up, Down

6971103530746

53074

EK-RAZORLING-LK

Razor Recessed Mount Exit Emergency Sign IP20 3 Hours 20m Wireless LYNK White ISO Legend Kit Included Left, Right, Up, Down

6971103530753

53075

PRODUCT RANGE (BLACK)

ORDER CODE

PRODUCT NUMBER

SKU

EK-RAZORLING-B-ST

Razor Recessed Mount Exit Emergency Sign IP20 3 Hours 20m Self Test ISO Legend Kit Included Left, Right, Up, Down

6971103530760

53076

EK-RAZORLING-B-DA

Razor Recessed Mount Exit Emergency Sign IP20 3 Hours 20m DALI ISO Legend Kit Included Left, Right, Up, Down

6971103530784

53078

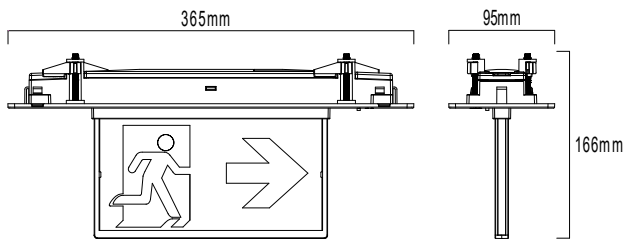
EK-RAZORLING-B-LK

Razor Recessed Mount Exit Emergency Sign IP20 3 Hours 20m wireless LYNK ISO Legend Kit Included Left, Right, Up, Down

6971103530791

53079

LINE DRAWINGS



MECHANICAL

Body Material	Polycarbonate
Fitting Colour	White/Black
Mounting Type	Recessed mount
IP Rating	IP20

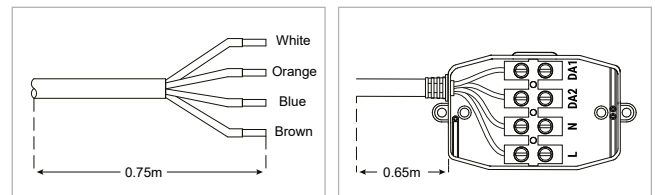
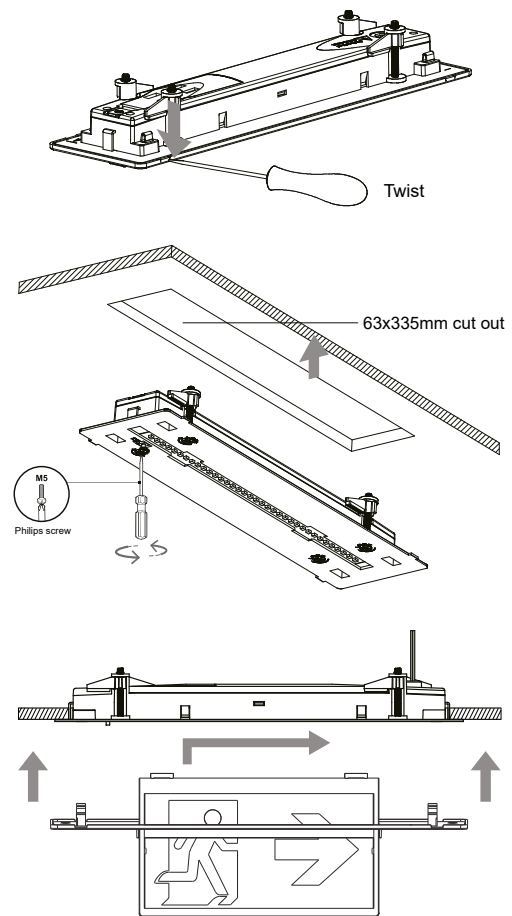
ELECTRICAL

Voltage	220-240V~
I _{in}	< 0.03A
Frequency	50/60Hz
Ambient Temperature	0-40°C
Class	II
Emergency Duration	180min
Battery Code	zc-batt-1A1-ACA
Battery Type	LiFePO ₄ 3.2V 1500mAh 4.8Wh
Battery Supply Current	180mA
Charging Time	24h
Charging Operation	Multi state
Charging Type	CC / CV
Battery service life	5 Years
Viewing Distance	20m
Wiring	4 Core Free end
CCT	6500k
Maintained max power consumption	2.8W
Maintained average power consumption	2.3W
L70(hours) >	60000h

RELEVANT STANDARDS

-	IEC 60598-1
-	IEC 60598-2-22
-	BS 5266-1
-	EN 62034
-	IEC 62386
-	EN 1838
-	ISO 3864 Part 1+3
-	ISO 7010

DIMENSIONS



RAZOR SM



LYNK



2025 H1 January to June

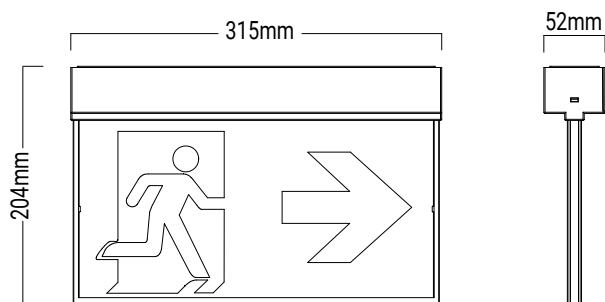
PRODUCT RANGE (WHITE)

ORDER CODE	PRODUCT NUMBER	SKU
EK-RAZOR-SM-ST Razor Surface Mounted Exit Emergency Sign IP20 3 Hours 30m White Self Test ISO Legend Kit Included Left, Right, Up, Down	6971103536236	53623
EK-RAZOR-SM-DA Razor Surface Mounted Exit Emergency Sign IP20 3 Hours 30m White DALI ISO Legend Kit Included Left, Right, Up, Down	6971103536250	53625
EK-RAZOR-SM-LK Razor Surface Mounted Exit Emergency Sign IP20 3 Hours 30m White Wireless ISO Legend Kit Included Left, Right, Up, Down	6971103536274	53627

PRODUCT RANGE (BLACK)

ORDER CODE	PRODUCT NUMBER	SKU
EK-RAZOR-SM-B-ST Razor Surface Mounted Exit Emergency Sign IP20 3 Hours 30m Black Self Test ISO Legend Kit Included Left, Right, Up, Down	6971103536243	53624
EK-RAZOR-SM-B-DA Razor Surface Mounted Exit Emergency Sign IP20 3 Hours 30m Black DALI ISO Legend Kit Included Left, Right, Up, Down	6971103536267	53626
EK-RAZOR-SM-B-LK Razor Surface Mounted Exit Emergency Sign IP20 3 Hours 30m Black Wireless ISO Legend Kit Included Left, Right, Up, Down	6971103536281	53628

LINE DRAWINGS



MECHANICAL

Body Material	Polycarbonate
Fitting Colour	White/Black
Mounting Type	Surface mount/Wall mount
IP Rating	IP20

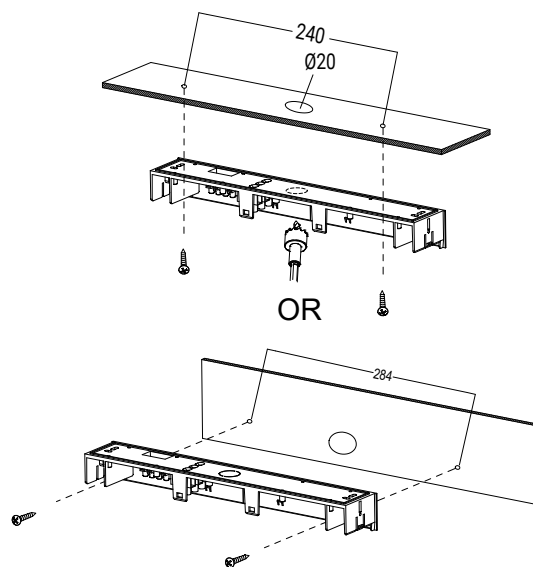
ELECTRICAL

Voltage	220-240V~
Iin	< 0.03A
Frequency	50/60Hz
Ambient Temperature	0-40°C
Class	II
Emergency Duration	180min
Battery Code	zc-batt-1A1-ACA
Battery Type	LiFePO ₄ 3.2V 1500mAh 4.8Wh
Battery Supply Current	300mA
Charging Time	24h
Charging Operation	Multi state
Charging Type	CC / CV
Battery service life	5 Years
Viewing Distance	30m
Wiring	Push Terminal block (0.5-2.5mm ² □)
CCT	6500k
Maintained max power consumption	2.6W
Maintained average power consumption	2.3W
L70(hours) >	60000h

RELEVANT STANDARDS

-	IEC 60598-1
-	IEC 60598-2-22
-	BS 5266-1
-	EN 62034
-	IEC 62386
-	EN 1838
-	ISO 3864 Part 1+3
-	ISO 7010

DIMENSIONS



ACCESSORY RANGE

SKU	ORDER CODE	DESCRIPTION
01990	EV-RODMOUNT-WHT	White Rod Mount Kit
02004	EV-RODMOUNT-BLK	Black Rod Mount Kit
15196	EV-RAZOR-SM-CORE-WB	Wall Bracket to suit EV-RAZOR-SM-CORE - White

RAZOR SM TRACK



LYNK



2025 H1 January to June

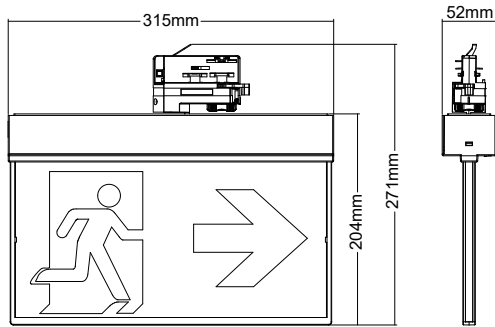
PRODUCT RANGE (WHITE)

ORDER CODE	PRODUCT NUMBER	SKU
EK-RAZOR-TK-ST Razor Surface Mounted Exit Emergency Sign IP20 3 Hours 30m Track White Self Test ISO	6971103538865	53886
EK-RAZOR-TK-LK Razor Surface Mounted Exit Emergency Sign IP20 3 Hours 30m Track White Wireless ISO	6971103538889	53888

PRODUCT RANGE (BLACK)

ORDER CODE	PRODUCT NUMBER	SKU
EK-RAZOR-TK-B-ST Razor Surface Mounted Exit Emergency Sign IP20 3 Hours 30m Track Black Self Test ISO	6971103538872	53887
EK-RAZOR-TK-B-LK Razor Surface Mounted Exit Emergency Sign IP20 3 Hours 30m Track Black Wireless ISO	6971103538896	53889

LINE DRAWINGS



MECHANICAL

Body Material	Polycarbonate
Fitting Colour	White
Mounting Type	Track installation
IP Rating	IP20

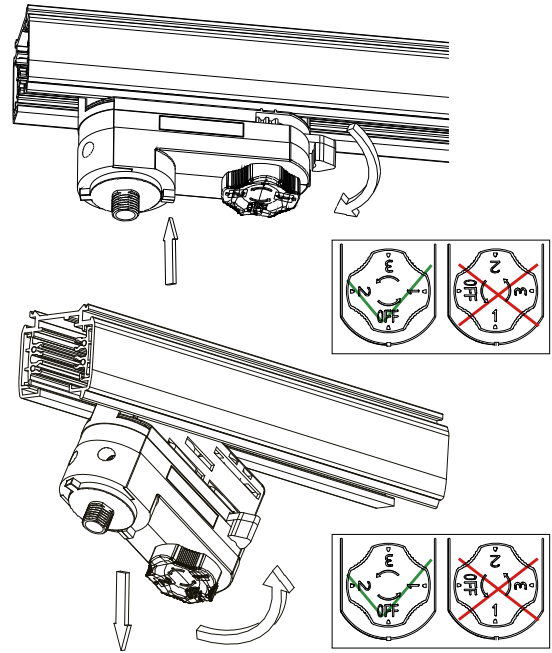
ELECTRICAL

Voltage	220-240V~
lin	< 0.03A
Frequency	50/60Hz
Ambient Temperature	0-40°C
Class	II
Emergency Duration	180min
Battery Code	zc-batt-1A1-ACA
Battery Type	LiFePO ₄ 3.2V 1500mAh 4.8Wh
Battery Supply Current	300mA
Charging Time	24h
Charging Operation	Multi state
Charging Type	CC / CV
Battery service life	5 Years
Viewing Distance	30m
Wiring	Track adapter
CCT	6500k
Maintained max power consumption	2.6W
Maintained average power consumption	2.3W
L70(hours) >	60000h

RELEVANT STANDARDS

-	IEC 60598-1
-	IEC 60598-2-22
-	BS 5266-1
-	EN 62034
-	IEC 62386
-	EN 1838
-	ISO 3864 Part 1+3
-	ISO 7010

DIMENSIONS



RAZOR SM PENDANT



LYNK



2025 H1 January to June

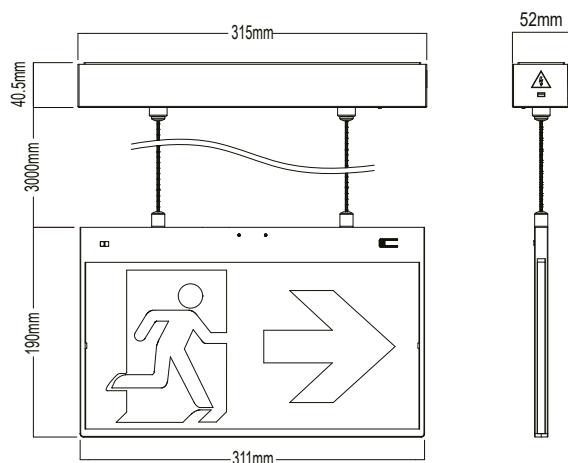
PRODUCT RANGE (WHITE)

ORDER CODE	PRODUCT NUMBER	SKU
EK-RAZOR-SP-DA Razor Pendant Surface Mounted Exit Emergency Sign IP20 3 Hours 30m DALI White ISO Legend Kit Included Left, Right, Up, Down	6971103537691	53769
EK-RAZOR-SP-LK Razor Pendant Mounted Exit Emergency Sign IP20 3 Hours 30m White ISO Legend Kit Included Left, Right, Up, Down emergency wireless	6971103537707	53770

PRODUCT RANGE (BLACK)

ORDER CODE	PRODUCT NUMBER	SKU
EK-RAZOR-SP-B-DA Razor Pendant Surface Mounted Exit Emergency Sign IP20 3 Hours 30m DALI ISO Legend Kit Included Left, Right, Up, Down	6971103538513	53851
EK-RAZOR-SP-B-LK Razor Pendant Mounted Exit Emergency Sign IP20 3 Hours 30m ISO Legend Kit Included Left, Right, Up, Down emergency wireless	6971103538520	53852

LINE DRAWINGS



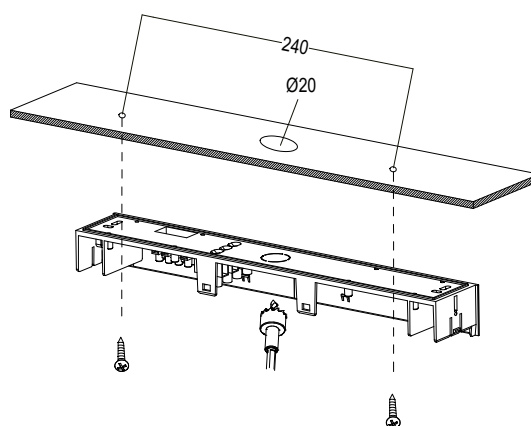
MECHANICAL

Body Material	Polycarbonate
Fitting Colour	White
Mounting Type	Surface mount
IP Rating	IP20

ELECTRICAL

Voltage	220-240V~
Iin	< 0.04A
Frequency	50/60Hz
Ambient Temperature	0-40°C
Class	II
Emergency Duration	180min
Battery Code	zc-batt-1A1-ACA
Battery Type	LiFePO ₄ 3.2V 1500mAh 4.8Wh
Battery Supply Current	300mA
Charging Time	16h
Charging Operation	Multi state
Charging Type	CC / CV
Battery service life	5 Years
Viewing Distance	30m
Wiring	Push Terminal block (0.5-2.5mm ² □)
CCT	6500k
Maintained max power consumption	2.6W
Maintained average power consumption	2.0W
L70(hours) >	36000h

DIMENSIONS



RELEVANT STANDARDS

-	IEC 60598-1
-	IEC 60598-2-22
-	BS 5266-1
-	EN 62034
-	IEC 62386
-	EN 1838
-	ISO 3864 Part 1+3
-	ISO 7010

BOXIT SLIM



LYNK



2025 H1 January to June

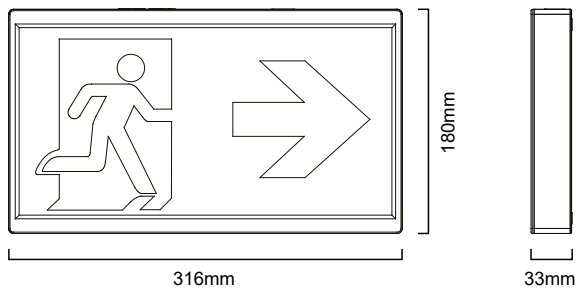
PRODUCT RANGE (WHITE)

ORDER CODE	PRODUCT NUMBER	SKU
EK-BOXIT-SLIM-ST Boxit Slim Wall Mount Emergency Exit Sign IP20 3 Hours 30m Self Test White ISO Legend Kit Included Left, Right, Up, Down	6971103532252	53225
EK-BOXIT-SLIM-DA Boxit Slim Wall Mount Emergency Exit Sign IP20 3 Hours 30m DALI White ISO Legend Kit Included Left, Right, Up, Down	6971103534119	53411
EK-BOXIT-SLIM-LK Boxit Slim Wall Mount Emergency Exit Sign IP20 3 Hours 30m Wireless White ISO Legend Kit Included Left, Right, Up, Down	6971103536335	53633

PRODUCT RANGE (BLACK)

ORDER CODE	PRODUCT NUMBER	SKU
EK-BOXIT-SLIM-B-ST Boxit Slim Wall Mount Emergency Exit Sign IP20 3 Hours 30m Self Test ISO Legend Kit Included Left, Right, Up, Down	6971103536304	53630
EK-BOXIT-SLIM-B-DA Boxit Slim Wall Mount Emergency Exit Sign IP20 3 Hours 30m DALI ISO Legend Kit Included Left, Right, Up, Down	6971103534126	53412
EK-BOXIT-SLIM-B-LK Boxit Slim Wall Mount Emergency Exit Sign IP20 3 Hours 30m Wireless ISO Legend Kit Included Left, Right, Up, Down	6971103536342	53634

LINE DRAWINGS



MECHANICAL

Body Material	Polycarbonate
Fitting Colour	White
Mounting Type	Surface mount/Wall mount
IP Rating	IP20

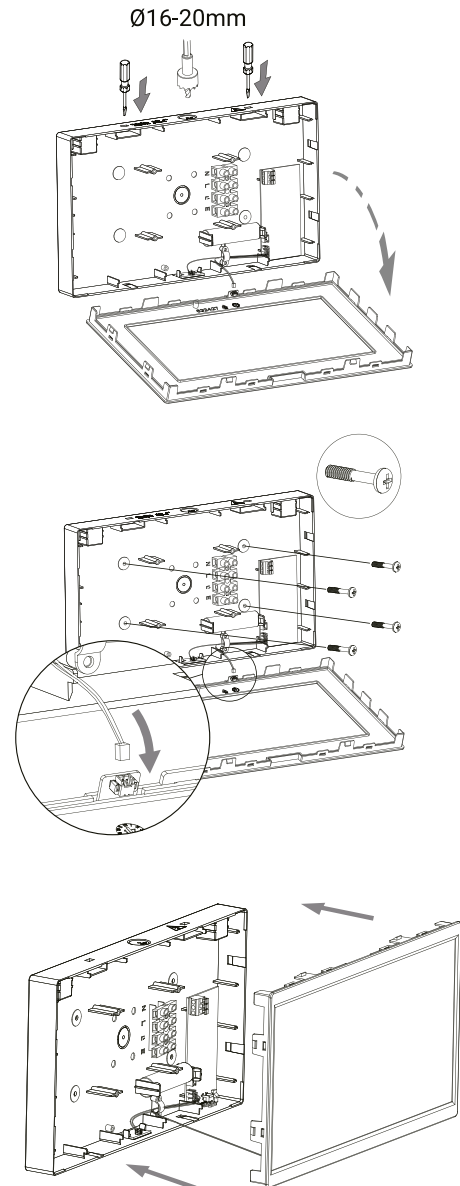
ELECTRICAL

Voltage	220-240V~
I _{in}	< 0.03A
Frequency	50/60Hz
Ambient Temperature	0-40°C
Class	II
Emergency Duration	180min
Battery Code	zc-batt-1A1-ACA
Battery Type	LiFePO ₄ 3.2V 1500mAh 4.8Wh
Battery Supply Current	300mA
Charging Time	24h
Charging Operation	Multi state
Charging Type	CC / CV
Battery service life	5 Years
Viewing Distance	30m
Wiring	Push Terminal block (0.5-2.5mm ² □)
CCT	6500k
Maintained max power consumption	2.6W
Maintained average power consumption	2.3W
L70(hours) >	60000h

RELEVANT STANDARDS

-	IEC 60598-1
-	IEC 60598-2-22
-	BS 5266-1
-	EN 62034
-	IEC 62386
-	EN 1838
-	ISO 3864 Part 1+3
-	ISO 7010

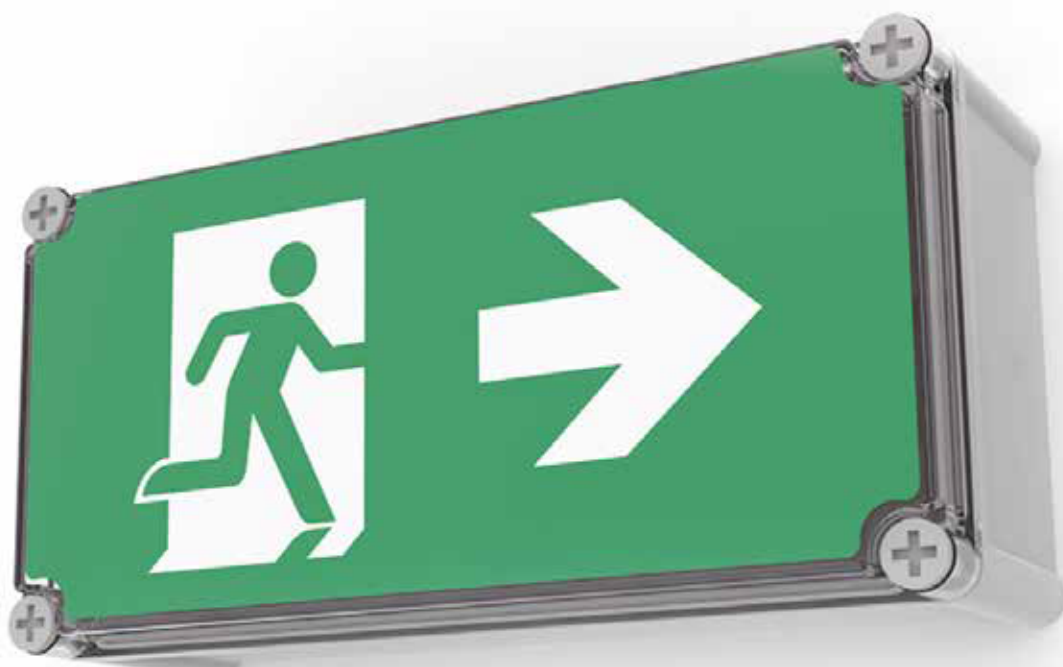
DIMENSIONS



BOXIT IP65



LYNK

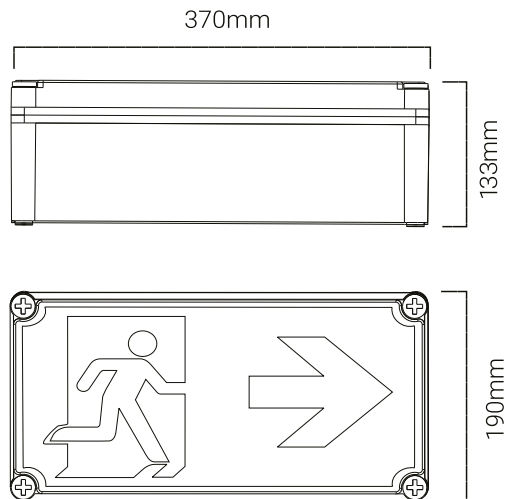


2025 H1 January to June

PRODUCT RANGE (WHITE)

ORDER CODE	PRODUCT NUMBER	SKU
EK-BOXIT-IP65-PRO-DA Boxit Pro IP65 Wallmount Exit Light-30m	6971103538506	53850

LINE DRAWINGS



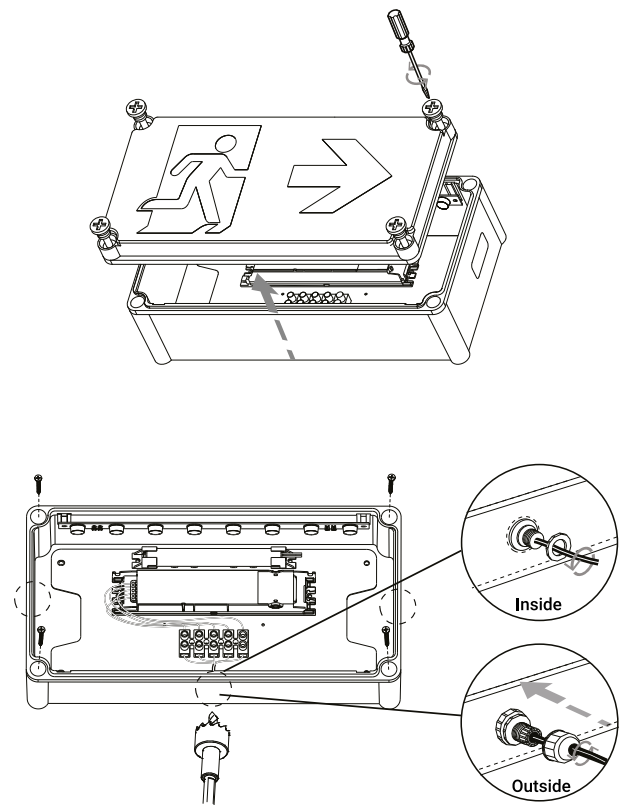
MECHANICAL

Body Material	Polycarbonate
Fitting Colour	White
Mounting Type	Surface mount
IP Rating	IP65
IK Rating	IK09

ELECTRICAL

Voltage	220-240V~
Iin	< 0.03A
Frequency	50/60Hz
Ambient Temperature	0-40°C
Class	I
Emergency Duration	180min
Battery Code	zc-batt-2A1-AAA
Battery Type	LiFePO ₄ 6.4V 1500mAh 9.6Wh
Battery Supply Current	300mA
Charging Time	24h
Charging Operation	Multi state
Charging Type	CC / CV
Battery service life	5 Years
Viewing Distance	30m
Wiring	Screw Terminal block(0.5-16mm ² □)
CCT	6500k
Maintained max power consumption	2.5W
Maintained average power consumption	2.0W
L70(hours) >	60000h

DIMENSIONS



RELEVANT STANDARDS

-	IEC 60598-1
-	IEC 60598-2-22
-	BS 5266-1
-	EN 62034
-	IEC 62386
-	EN 1838
-	ISO 3864 Part 1+3
-	ISO 7010

BOXIT JUMBO IP65

CE LYNK

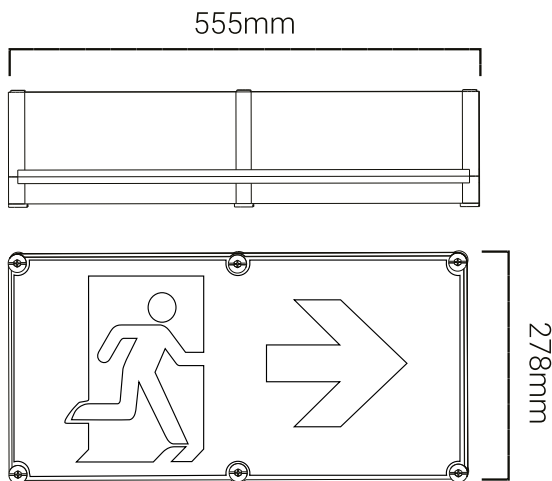


2025 H1 January to June

PRODUCT RANGE (WHITE)

ORDER CODE	PRODUCT NUMBER	SKU
EK-BOXIT-JUMBO-IP65-PRO Boxit Pro IP65 Wallmount Exit Light-50m	6971103538858	53885

LINE DRAWINGS



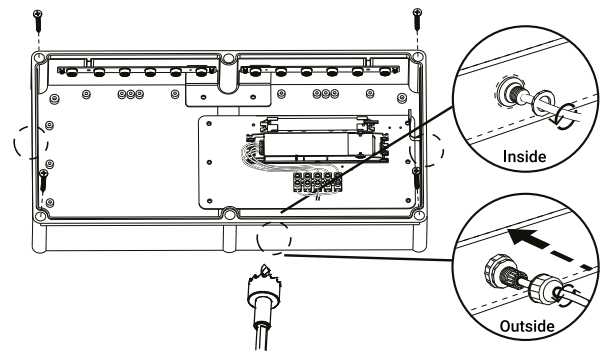
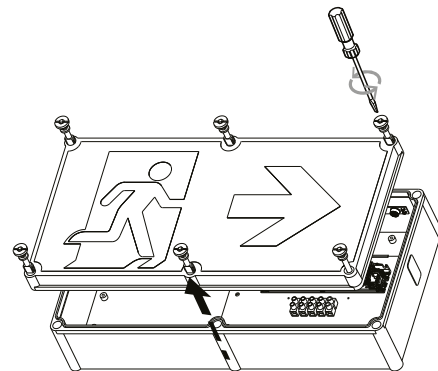
MECHANICAL

Body Material	Polycarbonate
Fitting Colour	White
Mounting Type	Surface mount
IP Rating	IP65
IK Rating	IK09

ELECTRICAL

Voltage	220-240V~
Iin	< 0.03A
Frequency	50/60Hz
Ambient Temperature	0-40°C
Class	I
Emergency Duration	180min
Battery Code	zc-batt-2B1-AAA
Battery Type	LiFePO ₄ 6.4V 3000mAh 19.2Wh
Battery Supply Current	500mA
Charging Time	24h
Charging Operation	Multi state
Charging Type	CC / CV
Battery service life	5 Years
Viewing Distance	50m
Wiring	Screw Terminal block(0.5-16mm ² □)
CCT	6500k
Maintained max power consumption	3.5W
Maintained average power consumption	3.0W
L70(hours) >	60000h

DIMENSIONS



RELEVANT STANDARDS

-	IEC 60598-1
-	IEC 60598-2-22
-	BS 5266-1
-	EN 62034
-	IEC 62386
-	EN 1838
-	ISO 3864 Part 1+3
-	ISO 7010

MERCURY



LYNK



2025 H1 January to June

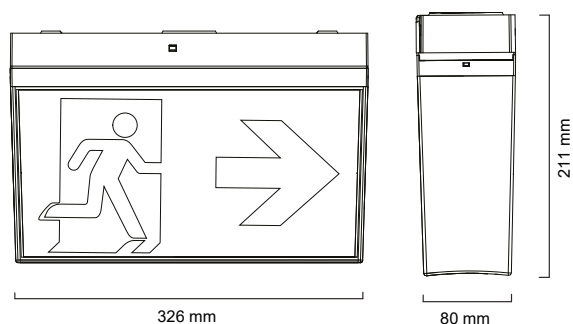
PRODUCT RANGE (WHITE)

ORDER CODE	PRODUCT NUMBER	SKU
EK-MERCURY-ST Mercury Surface Mounted Exit Emergency Sign White	6971103537769	53776
EK-MERCURY-DA Mercury Surface Mounted Exit Emergency Sign DALI White	6971103537783	53778
EK-MERCURY-LK Mercury Surface Mounted Exit Emergency Sign Wireless White	6971103537806	53780

PRODUCT RANGE (BLACK)

ORDER CODE	PRODUCT NUMBER	SKU
EK-MERCURY-B-ST Mercury Surface Mounted Exit Emergency Sign Self Test Black	6971103537776	53777
EK-MERCURY-B-DA Mercury Surface Mounted Exit Emergency Sign DALI Black	6971103537790	53779
EK-MERCURY-B-LK Mercury Surface Mounted Exit Emergency Sign Wireless Black	6971103537813	53781

LINE DRAWINGS



MECHANICAL

Body Material	Polycarbonate
Fitting Colour	White
Mounting Type	Surface mount/Wall mount
IP Rating	IP20

ELECTRICAL

Voltage	220-240V~
Iin	< 0.03A
Frequency	50/60Hz
Ambient Temperature	0-40°C
Class	II
Emergency Duration	180min
Battery Code	zc-batt-1A1-ACA
Battery Type	LiFePO ₄ 3.2V 1500mAh 4.8Wh
Battery Supply Current	330mA
Charging Time	24h
Charging Operation	Multi state
Charging Type	CC / CV
Battery service life	5 Years
Viewing Distance	30m
Wiring	Hard wired (16mm ² □)
CCT	6500k
Maintained max power consumption	2.5W
Maintained average power consumption	2.0W
L70(hours) >	60000h

RELEVANT STANDARDS

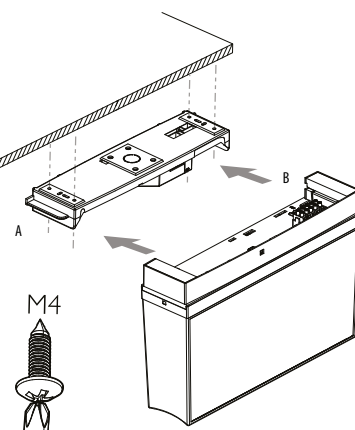
-	IEC 60598-1
-	IEC 60598-2-22
-	BS 5266-1
-	EN 62034
-	IEC 62386
-	EN 1838
-	ISO 3864 Part 1+3
-	ISO 7010

DIMENSIONS

MOUNTING

Mount cover and connect wiring to terminals.

Assemble the product by sliding the body into place.



ACCESSORY RANGE

SKU	ORDER CODE	DESCRIPTION
01990	EV-RODMOUNT-WHT	White Rod Mount Kit
02004	EV-RODMOUNT-BLK	Black Rod Mount Kit

MERCURY WEATHERPROOF CASE



2025 H1 January to June

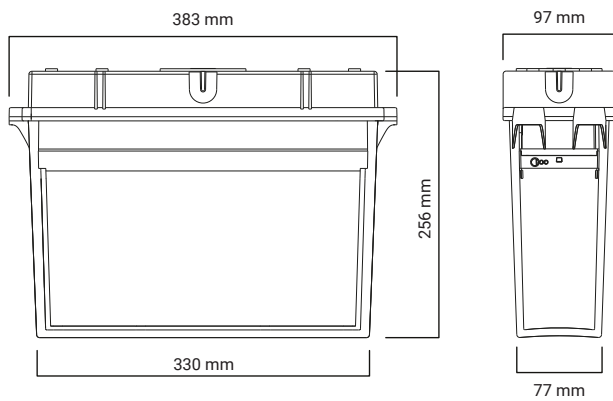
PRODUCT RANGE (WHITE)

ORDER CODE	PRODUCT NUMBER	SKU
EK-MERCURY-CASE-IP65 Weatherproof Case for Mercury	6971103538483	53848

PRODUCT RANGE (BLACK)

ORDER CODE	PRODUCT NUMBER	SKU
EK-MERCURY-CASE-IP65-B Weatherproof Case for Mercury Black	6971103538490	53849

LINE DRAWINGS



MECHANICAL

Body Material	Polycarbonate
Fitting Colour	Gray/Black
Mounting Type	Surface mount
IP Rating	IP65
IK Rating	IK10

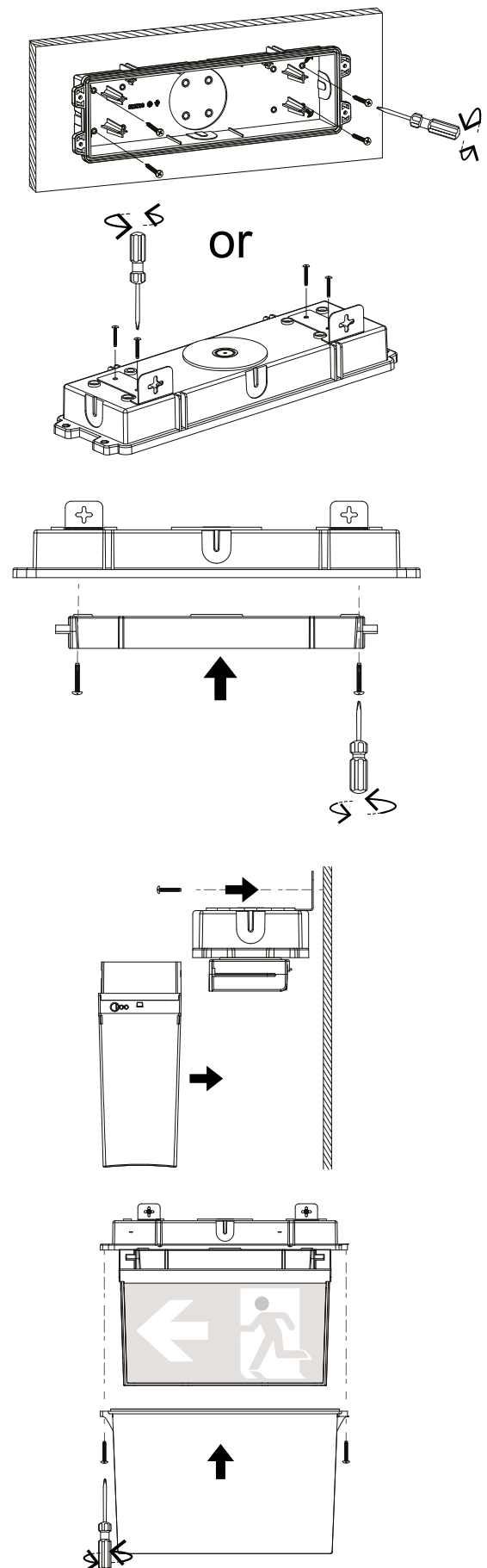
RELEVANT STANDARDS

- IEC 62262 (impact testing)
- IEC 60598.1 (IP testing)

ACCESSORY RANGE

SKU	ORDER CODE	DESCRIPTION
01990	EV-RODMOUNT-WHT	White Rod Mount Kit
02004	EV-RODMOUNT-BLK	Black Rod Mount Kit

DIMENSIONS



MERCURY JUMBO

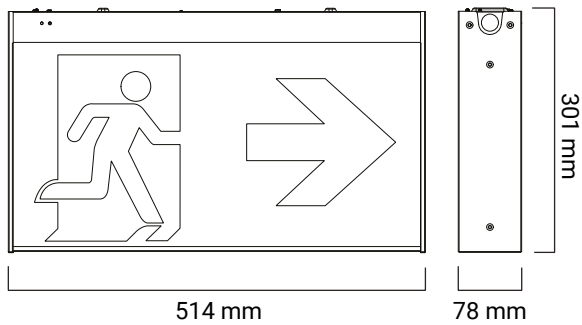


2025 H1 January to June

PRODUCT RANGE (WHITE)

ORDER CODE	PRODUCT NUMBER	SKU
EK-MERCURY-JUMBO-PRO Jumbo Basic Emergency Exit White	6971103538827	53882
EK-MERCURY-JUMBO-PRO-LK Lynk Mercury Jumbo Professional Emergency Exit - White/wireless	6971103538834	53883

LINE DRAWINGS



MECHANICAL

Body Material	Powder coated aluminium and PC
Fitting Colour	White
Mounting Type	Surface/suspended (Rod Mount Kit available)
IP Rating	IP20

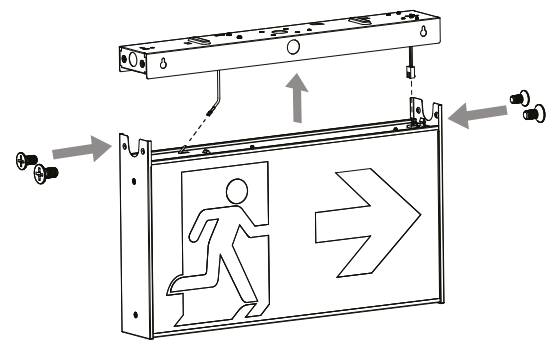
ELECTRICAL

Voltage	220-240V~
lin	< 0.03A
Frequency	50/60Hz
Ambient Temperature	0-40°C
Class	II
Emergency Duration	180min
Battery Code	zc-batt-2A1-AAA
Battery Type	LiFePO ₄ 6.4V 1500mAh 9.6Wh
Battery Supply Current	330mA
Charging Time	24h
Charging Operation	Multi state
Charging Type	CC / CV
Battery service life	5 Years
Viewing Distance	50m
Wiring	Hard wired (16mm ² □)
CCT	6500k
Maintained max power consumption	2.5W
Maintained average power consumption	2.0W
L70(hours) >	60000h

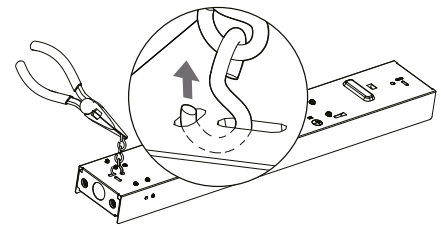
RELEVANT STANDARDS

-	IEC 60598-1
-	IEC 60598-2-22
-	BS 5266-1
-	EN 62034
-	IEC 62386
-	EN 1838
-	ISO 3864 Part 1+3
-	ISO 7010

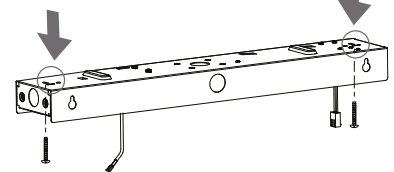
DIMENSIONS



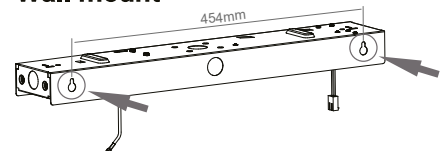
Jack chain mount



Ceiling mount



Wall mount



ALECTIS IP65



LYNK

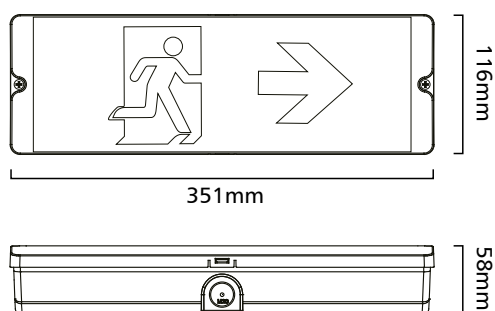


2025 H1 January to June

PRODUCT RANGE (WHITE)

ORDER CODE	PRODUCT NUMBER	SKU
EK-ALECTIS-IP65-ST		
Alectis Surface/Wall Mounted Emergency Bulkhead IP65 3 Hours 20m Self Test White ISO Legend Kit Included Left, Right, Up, Down	6971103536359	53635
EK-ALECTIS-IP65-DA		
Alectis Surface/Wall Mounted Emergency Bulkhead IP65 3 Hours 20m Dali White ISO Legend Kit Included Left, Right, Up, Down	6971103535963	53596
EK-ALECTIS-IP65-LK		
Alectis Surface/Wall Mounted Emergency Bulkhead IP65 3 Hours 20m wireless White ISO Legend Kit Included Left, Right, Up, Down	6971103536373	53637

LINE DRAWINGS



MECHANICAL

Body Material	Polycarbonate
Fitting Colour	Grey
Mounting Type	Surface mount
IP Rating	IP65

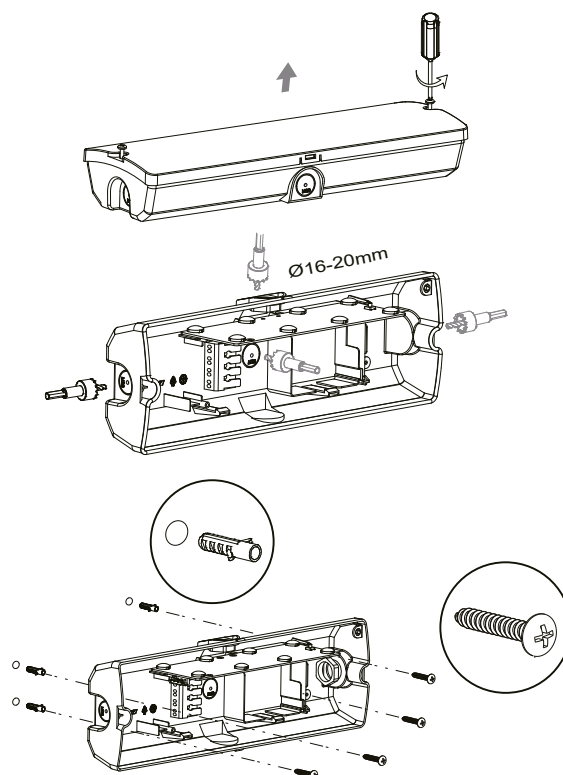
ELECTRICAL

Voltage	220-240V~
Iin	< 0.03A
Frequency	50/60Hz
Ambient Temperature	0-40°C
Class	II
Emergency Duration	180min
Battery Code	zc-batt-1A1-ACA
Battery Type	LiFePO ₄ 3.2V 1500mAh 4.8Wh
Battery Supply Current	330mA
Charging Time	24h
Charging Operation	Multi state
Charging Type	CC / CV
Battery service life	5 Years
Viewing Distance	20m (with signage)
Wiring	Push Terminal block (0.5-2.5mm ² □)
CCT	6500k
Maintained max power consumption	3.5W
Maintained average power consumption	2.7W
L70(hours) >	60000h

RELEVANT STANDARDS

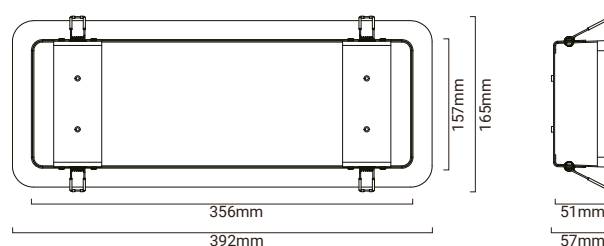
-	IEC 60598-1
-	IEC 60598-2-22
-	BS 5266-1
-	EN 62034
-	IEC 62386
-	EN 1838
-	ISO 3864 Part 1+3
-	ISO 7010

DIMENSIONS



ACCESSORY RANGE

SKU	ORDER CODE	DESCRIPTION
01990	EV-RODMOUNT-WHT	White Rod Mount Kit
02004	EV-RODMOUNT-BLK	Black Rod Mount Kit
53758	EK-ALECTIS-RECESS-KIT-B	Alectis Recessed Bracket Black
	EK-ALECTIS-RECESS-KIT	Alectis Recessed Bracket White





Our emergency luminaires are available in recessed, rod and surface mount options, The Ledfire range (pictured) is a non-maintained, energy efficient emergency luminaire with reliable design and quality Lithium (LiFePO_4) iron phosphate batteries.

LED FIRE / SLIM FIRE

FEATURES



QUALITY COMPONENTS

All Ektor Ledfires are built with quality components and undergo extensive testing.



CHOOSE YOUR STYLE

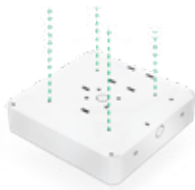
Ektor Ledfires are available in black or white finishes to suit your decor



POWER SAVING

Save money without compromising on design through the low power consumption of the Ledfire.

MOUNTING OPTIONS



SURFACE

Surface mount models allow for easy mounting onto exposed concrete with rear or side cable entry.



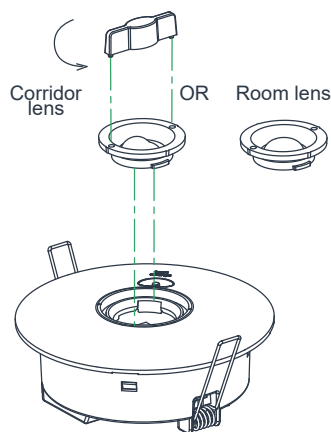
RECESSED

Recessed mounting suits a wide range of hole sizes and comes with a removeable outer ring for added installation flexibility.



ROD MOUNTING

These kits allow surface mount Ledfires to be suspended at a lower height.



INTER CHANG ABLE LENS

SLIMFIRE

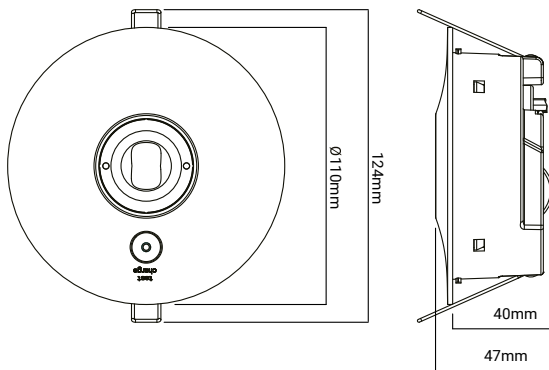


2025 H1 January to June

PRODUCT RANGE (WHITE)		
ORDER CODE	PRODUCT NUMBER	SKU
EK-SLIMFIRE-ST Ledfire Basic Emergency Luminaire Self Test White	6971103538421	53842
EK-SLIMFIRE-DA Ledfire Basic Emergency Luminaire DALI White	6971103537882	53788
EK-SLIMFIRE-LK Ledfire Basic Emergency Luminaire Lynk White	6971103537899	53789

PRODUCT RANGE (BLACK)		
ORDER CODE	PRODUCT NUMBER	SKU
EK-SLIMFIRE-B-ST Ledfire Basic Emergency Luminaire Self Test Black	6971103538438	53843
EK-SLIMFIRE-B-DA Ledfire Basic Emergency Luminaire DALI Black	6971103538445	53844
EK-SLIMFIRE-B-LK Ledfire Basic Emergency Luminaire Lynk Black	6971103538452	53845

LINE DRAWINGS



MECHANICAL

Body Material	Polycarbonate
Fitting Colour	White/Black
Mounting Type	Recessed mount
IP Rating	IP44 (surface only)

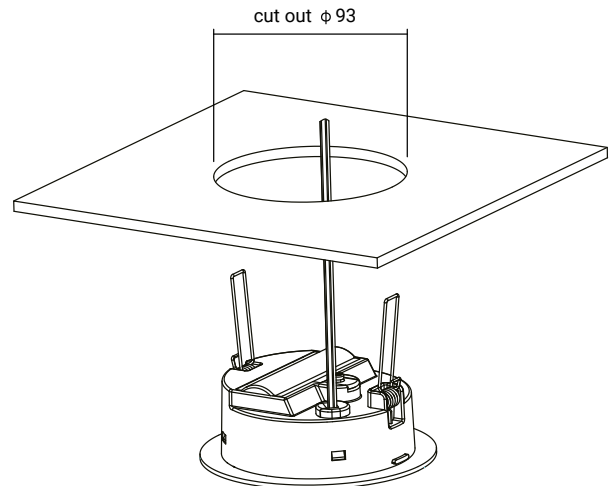
ELECTRICAL

Voltage	220-240V~
Iin	< 0.01A
Frequency	50/60Hz
Ambient Temperature	0-40°C
Class	II
Emergency Duration	180min
Battery Code	zc-batt-1A1-ACA
Battery Type	LiFePO ₄ 3.2V 3400mAh 10.88Wh
Battery Supply Current	800mA
Charging Time	24h
Charging Operation	Multi state
Charging Type	CC / CV
Battery service life	5 Years
Wiring	Free core
CCT	6500k
Max power consumption	1.5W
Average power consumption	0.4W
Emergency Lm:	Room lens 240 / Corridor lens 235

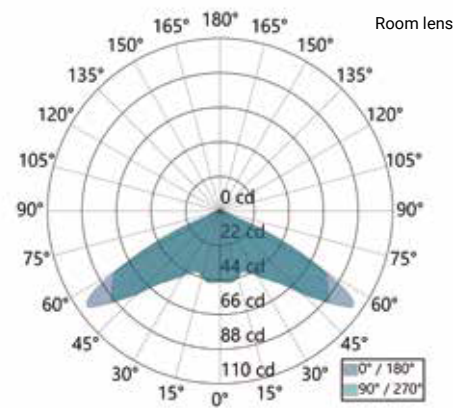
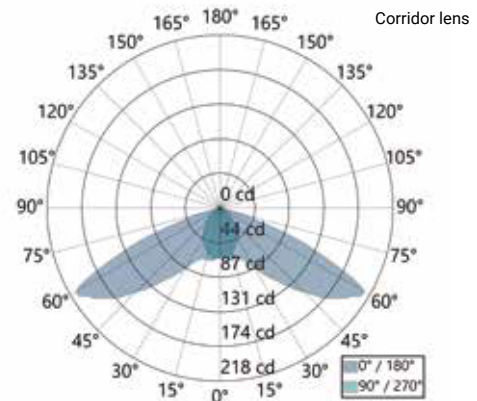
RELEVANT STANDARDS

-	IEC 60598-1
-	IEC 60598-2-22
-	BS 5266-1
-	EN 62034
-	IEC 62386
-	EN 1838









DIMENSIONS











LUMINOUS INTENSITY DISTRIBUTION DIAGRAM



Corridor lens

SPACING TABLE								
Mounting Height	0.5 lux				1 lux			
2.5m	6.69	13.37	6.64	3.32	6.04	12.07	5.46	2.73
3.0m	7.62	15.23	7.28	3.64	6.58	13.17	5.69	2.85
4.0m	8.98	17.97	8.00	4.00	7.85	15.70	6.03	3.01
5.0m	10.25	20.50	8.24	4.12	8.66	17.32	6.01	3.00

Room lens

SPACING TABLE								
Mounting Height	0.5 lux				1 lux			
2.5m	5.24	10.48	10.72	5.36	4.70	9.40	9.40	4.70
3.0m	5.89	11.78	12.03	6.02	5.20	10.39	10.39	5.20
4.0m	7.22	14.43	14.43	7.22	6.04	12.09	11.22	5.61
5.0m	8.16	16.32	15.70	7.85	4.66	9.33	11.11	5.55

SLIMFIRE TRACK



LYNK



2025 H1 January to June

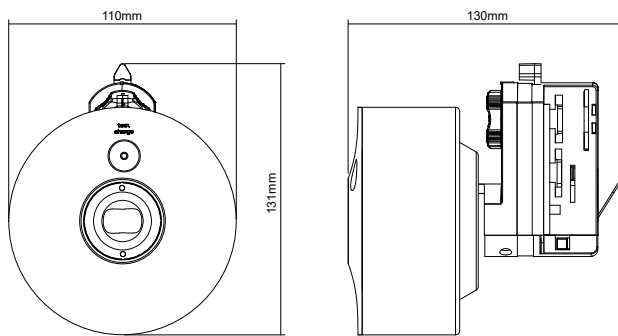
PRODUCT RANGE (WHITE)

ORDER CODE	PRODUCT NUMBER	SKU
EK-SLIMFIRE-TK-ST Ledfire Basic Emergency Luminaire Track Self Test White	6971103538742	53874
EK-SLIMFIRE-TK-LK Ledfire Basic Emergency Luminaire Track Lynk White	6971103538766	53876

PRODUCT RANGE (BLACK)

ORDER CODE	PRODUCT NUMBER	SKU
EK-SLIMFIRE-TK-B-ST Ledfire Basic Emergency Luminaire Track Self Test Black	6971103538759	53875
EK-SLIMFIRE-TK-B-LK Ledfire Basic Emergency Luminaire Track Lynk Black	6971103538773	53877

LINE DRAWINGS



MECHANICAL

Body Material	Polycarbonate
Fitting Colour	White/Black
Mounting Type	Recessed mount
IP Rating	IP44 (surface only)

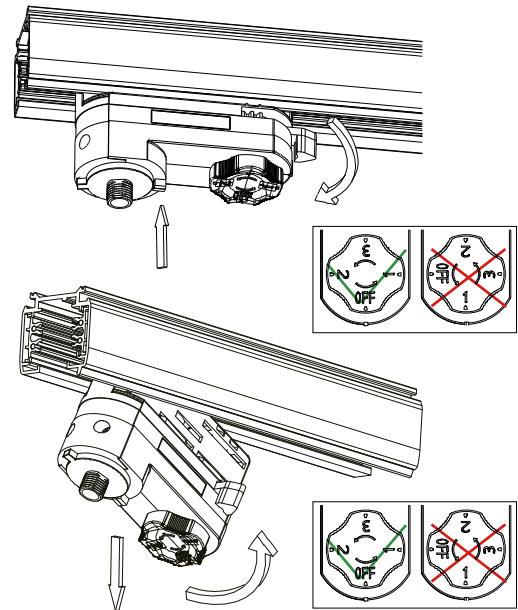
ELECTRICAL

Voltage	220-240V~
Iin	< 0.01A
Frequency	50/60Hz
Ambient Temperature	0-40°C
Class	II
Emergency Duration	180min
Battery Code	zc-batt-1A1-ACA
Battery Type	LiFePO ₄ 3.2V 3400mAh 10.88Wh
Battery Supply Current	800mA
Charging Time	24h
Charging Operation	Multi state
Charging Type	CC / CV
Battery service life	5 Years
Wiring	Track adapter
CCT	6500k
Max power consumption	1.5W
Average power consumption	0.4W
Emergency Lm:	Room lens 240 / Corridor lens 235

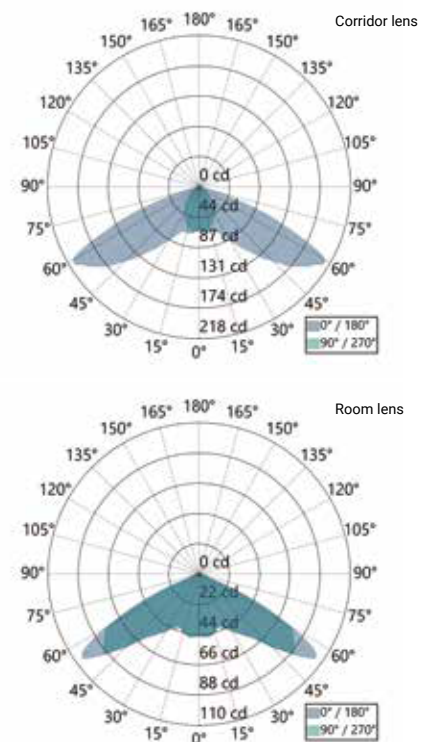
RELEVANT STANDARDS

-	IEC 60598-1
-	IEC 60598-2-22
-	BS 5266-1
-	EN 62034
-	IEC 62386
-	EN 1838

DIMENSIONS



LUMINOUS INTENSITY DISTRIBUTION DIAGRAM



Corridor lens

SPACING TABLE	0.5 lux	1 lux
Mounting Height	0.5 lux	1 lux
2.5m	6.69 13.37 6.64 3.32	6.04 12.07 5.46 2.73
3.0m	7.62 15.23 7.28 3.64	6.58 13.17 5.69 2.85
4.0m	8.98 17.97 8.00 4.00	7.85 15.70 6.03 3.01
5.0m	10.25 20.50 8.24 4.12	8.66 17.32 6.01 3.00

Room lens

SPACING TABLE	0.5 lux	1 lux
Mounting Height	0.5 lux	1 lux
2.5m	5.24 10.48 10.72 5.36	4.70 9.40 9.40 4.70
3.0m	5.89 11.78 12.03 6.02	5.20 10.39 10.39 5.20
4.0m	7.22 14.43 14.43 7.22	6.04 12.09 11.22 5.61
5.0m	8.16 16.32 15.70 7.85	6.66 13.32 11.11 5.55

LED FIRE SURFACE MOUNT IP65



LYNK



2025 H1 January to June

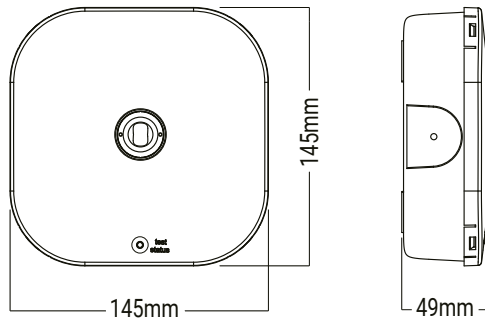
PRODUCT RANGE (WHITE)

ORDER CODE	PRODUCT NUMBER	SKU
EK-LED FIRE-SM-IP65-ST Ledfire Surface Mounted Emergency IP65 3 Hours Self Test White	6971103536113	53611
EK-LED FIRE-SM-IP65-DA Ledfire Surface Mounted Emergency IP65 3 Hours DALI White	6971103534102	53410
EK-LED FIRE-SM-IP65-LK Ledfire Surface Mounted Emergency IP65 3 Hours Wireless White	6971103536151	53615

PRODUCT RANGE (BLACK)

ORDER CODE	PRODUCT NUMBER	SKU
EK-LED FIRE-SM-IP65-B-ST Ledfire Surface Mounted Emergency IP65 3 Hours Self Test Black	6971103536120	53612
EK-LED FIRE-SM-IP65-B-DA Ledfire Surface Mounted Emergency IP65 3 Hours DALI Black	6971103536144	53614
EK-LED FIRE-SM-IP65-B-LK Ledfire Surface Mounted Emergency IP65 3 Hours Wireless Black	6971103536168	53616

LINE DRAWINGS



MECHANICAL

Body Material	Polycarbonate
Fitting Colour	White/Black
Mounting Type	Surface mount/Rod mount
IP Rating	IP65

ELECTRICAL

Voltage	220-240V~
Iin	< 0.03A
Frequency	50/60Hz
Ambient Temperature	0-40°C
Class	II
Emergency Duration	180min
Battery Code	zc-batt-1B1-ACA
Battery Type	LiFePO ₄ 3.2V 3400mAh 10.88Wh
Battery Supply Current	850mA
Charging Time	16h
Charging Operation	Multi state
Charging Type	CC / CV
Battery service life	5 Years
Wiring	Push Terminal block (0.5-2.5mm ² □)
CCT	6500k
Max power consumption	2W
Average power consumption	0.75W
Emergency Lm:	Room lens 202 / Corridor lens 200

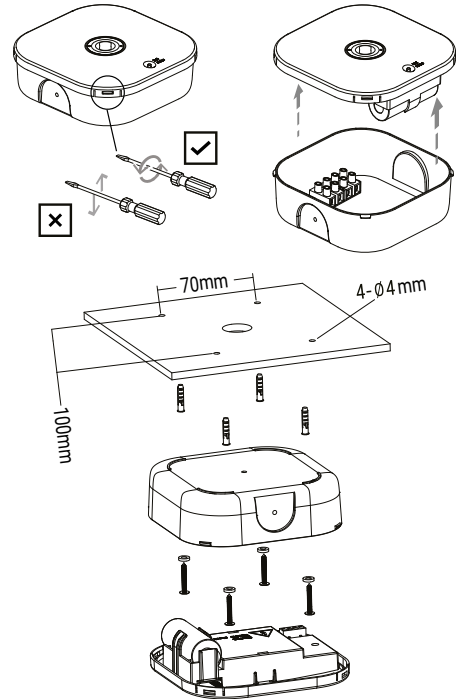
RELEVANT STANDARDS

-	IEC 60598-1
-	IEC 60598-2-22
-	BS 5266-1
-	EN 62034
-	IEC 62386
-	EN 1838

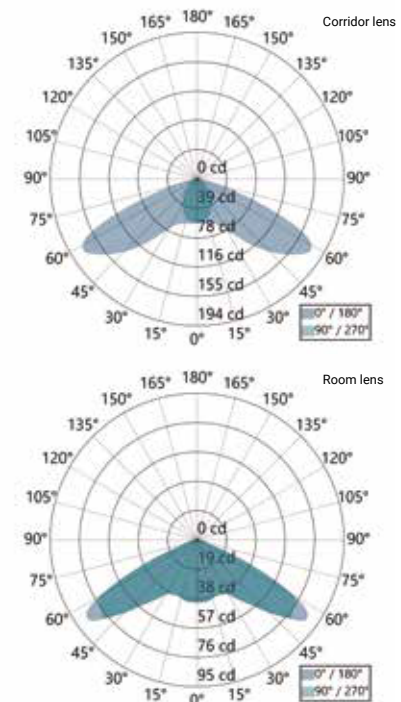
ACCESSORY RANGE

SKU	ORDER CODE	DESCRIPTION
01990	EV-RODMOUNT-WHT	White Rod Mount Kit
02004	EV-RODMOUNT-BLK	Black Rod Mount Kit

DIMENSIONS



LUMINOUS INTENSITY DISTRIBUTION DIAGRAM



Corridor lens

SPACING TABLE	0.5 lux	1 lux
Mounting Height	0.5 lux	1 lux
2.5m	6.19 12.38 6.40 3.20	5.49 10.97 5.27 2.63
3.0m	6.90 13.80 7.03 3.51	6.15 12.30 5.50 2.75
4.0m	8.39 16.77 7.73 3.86	7.22 14.43 5.71 2.85
5.0m	9.60 19.21 7.95 3.98	8.00 16.00 5.54 2.77

Room lens

SPACING TABLE	0.5 lux	1 lux
Mounting Height	0.5 lux	1 lux
2.5m	4.80 9.60 10.48 5.24	4.33 8.66 9.21 4.60
3.0m	5.53 11.05 11.78 5.89	4.90 9.79 10.19 5.09
4.0m	6.66 13.31 13.86 6.93	5.61 11.22 10.81 5.41
5.0m	7.55 15.11 14.83 7.41	6.44 12.87 11.81 5.91

LED FIRE



LYNK



2025 H1 January to June

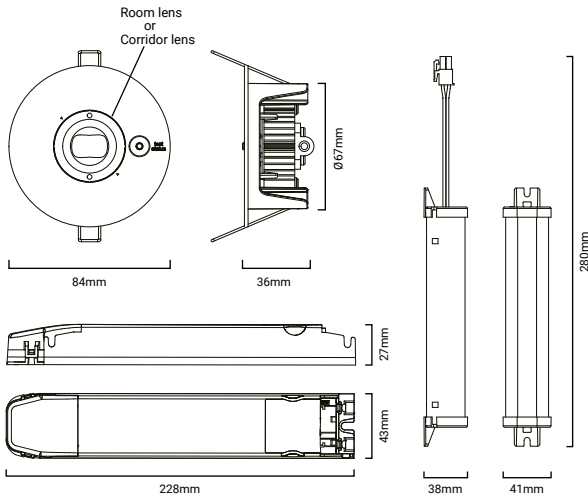
PRODUCT RANGE (WHITE)

ORDER CODE	PRODUCT NUMBER	SKU
EK-LED FIRE-DA Ledfire Recessed Mounted Emergency IP44 3 Hours DALI White (L,N, DA1, DA2)	6971103536076	53607

PRODUCT RANGE (BLACK)

ORDER CODE	PRODUCT NUMBER	SKU
EK-LED FIRE-B-DA Ledfire Recessed Mounted Emergency IP44 3 Hours DALI Black (L,N, DA1, DA2)	6971103536083	53608

LINE DRAWINGS



MECHANICAL

Body Material	Polycarbonate
Fitting Colour	White
Mounting Type	Recessed mount
IP Rating	IP20

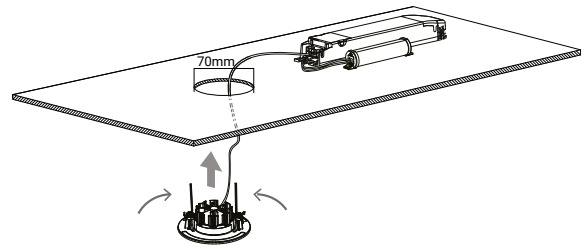
ELECTRICAL

Voltage	220-240V~
Iin	< 0.02A
Frequency	50/60Hz
Ambient Temperature	0-40°C
Class	II
Emergency Duration	180min
Battery Code	zc-batt-2B1-AAA
Battery Type	LiFePO4 6.4V 3000mAh 19.2Wh
Battery Supply Current	400mA
Charging Time	24h
Charging Operation	Multi state
Charging Type	CC / CV
Battery service life	5 Years
Wiring	4 Core Free End
CCT	6500k
Max power consumption	1.5W
Average power consumption	0.5W
Emergency Lm:	Room lens 378 / Corridor lens 347

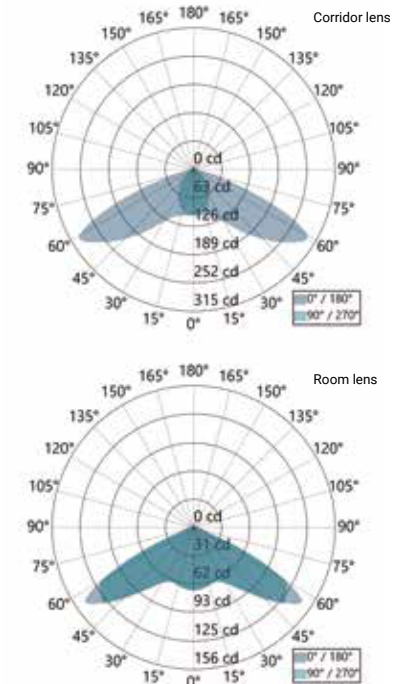
RELEVANT STANDARDS

-	IEC 60598-1
-	IEC 60598-2-22
-	BS 5266-1
-	EN 62034
-	IEC 62386
-	EN 1838

DIMENSIONS



LUMINOUS INTENSITY DISTRIBUTION DIAGRAM



Corridor lens

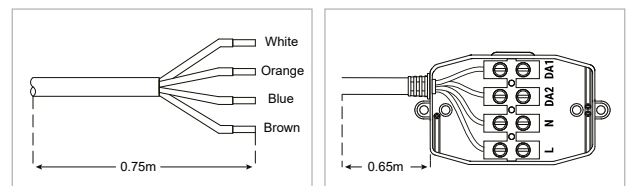
SPACING TABLE	0.5 lux	1 lux
Mounting Height	0.5 lux	1 lux
2.5m	6.87 13.74 7.28 3.64	6.19 12.38 6.17 3.09
3.0m	7.82 15.63 8.11 4.05	6.90 13.80 6.66 3.33
4.0m	9.42 18.85 9.20 4.60	8.39 16.77 7.20 3.60
5.0m	10.97 21.94 9.83 4.91	9.40 18.81 7.54 3.77

Room lens

SPACING TABLE	0.5 lux	1 lux
Mounting Height	0.5 lux	1 lux
2.5m	5.36 10.72 11.23 5.62	4.80 9.60 10.03 5.01
3.0m	6.02 12.03 12.87 6.43	5.41 10.82 11.28 5.64
4.0m	7.37 14.73 15.37 7.68	6.53 13.05 13.05 6.53
5.0m	8.49 16.98 17.32 8.66	7.41 14.83 13.76 6.88

JUNCTION BOX

SKU	ORDER CODE
53764	EK-LED FIRE-DA-JB
53765	EK-LED FIRE-B-DA-JB



LED FIRE SURFACE MOUNT



LYNK



2025 H1 January to June

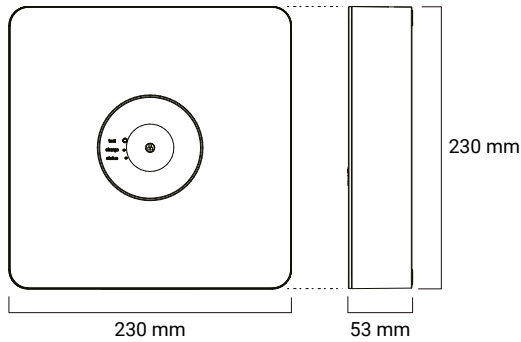
PRODUCT RANGE (WHITE)

ORDER CODE	PRODUCT NUMBER	SKU
EK-LED FIRE-SM-PRO-ST Ledfire Surface Mounted Professional Emergency Luminaire - White	6971103537714	53771
EK-LED FIRE-SM-PRO-DA Ledfire Surface Mounted Professional Emergency Luminaire - DALI - White	6971103530029	53002
EK-LED FIRE-SM-PRO-LK Lynk Ledfire Surface Mounted Professional Emergency Luminaire - Wireless - White	6971103537738	53773

PRODUCT RANGE (BLACK)

ORDER CODE	PRODUCT NUMBER	SKU
EK-LED FIRE-SM-PRO-B-ST Ledfire Surface Mounted Professional Emergency Luminaire - Black	6971103537721	53772
EK-LED FIRE-SM-PRO-B-DA Ledfire Surface Mounted Professional Emergency Luminaire - DALI - Black	6971103533099	53309
EK-LED FIRE-SM-PRO-B-LK Lynk Ledfire Surface Mounted Professional Emergency Luminaire - Wireless - Black	6971103537745	53774

LINE DRAWINGS



MECHANICAL

Body Material	Polycarbonate
Fitting Colour	White/Black
Mounting Type	Surface mount
IP Rating	IP20

ELECTRICAL

Voltage	220-240V~
Iin	< 0.02A
Frequency	50/60Hz
Ambient Temperature	0-40°C
Class	II
Emergency Duration	180min
Battery Code	zc-batt-2B1-AAA
Battery Type	LiFePO ₄ 6.4V 3000mAh 19.2Wh
Battery Supply Current	400mA
Charging Time	16h
Charging Operation	Multi state
Charging Type	CC / CV
Battery service life	5 Years
Wiring	Terminal block (0.5-16mm ²)
CCT	6500k
Max power consumption	1.5W
Average power consumption	<0.5W
Emergency Lm: Room lens 378 / Corridor lens 347	

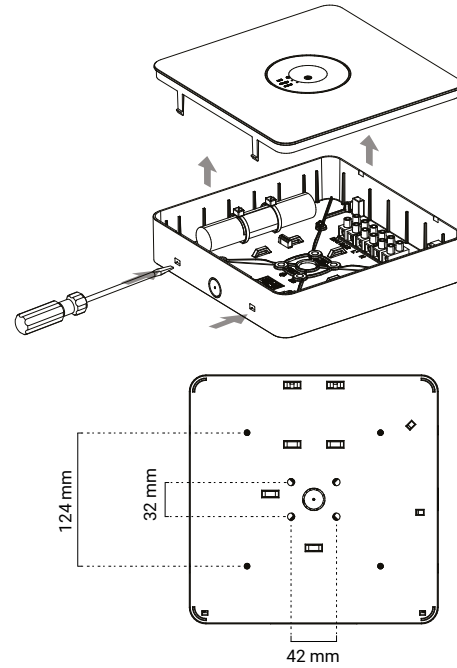
RELEVANT STANDARDS

-	IEC 60598-1
-	IEC 60598-2-22
-	BS 5266-1
-	EN 62034
-	IEC 62386
-	EN 1838

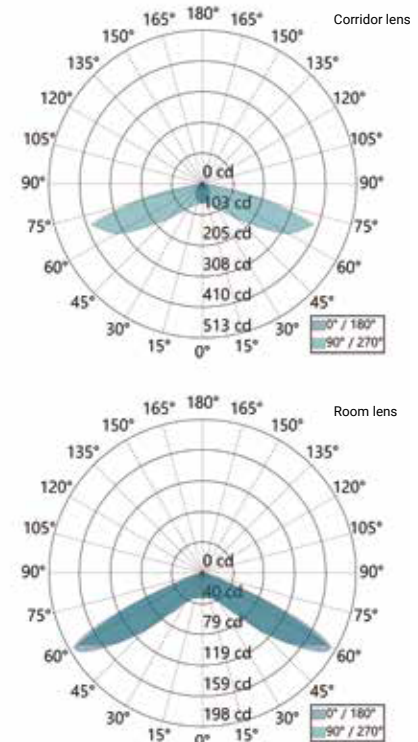
ACCESSORY RANGE

SKU	ORDER CODE	DESCRIPTION
01990	EV-RODMOUNT-WHT	White Rod Mount Kit
02004	EV-RODMOUNT-BLK	Black Rod Mount Kit









DIMENSIONS











LUMINOUS INTENSITY DISTRIBUTION DIAGRAM



Corridor lens

SPACING TABLE								
Mounting Height	0.5 lux				1 lux			
2.5m	4.08	8.16	19.33	9.67	3.14	6.29	16.35	8.18
3.0m	4.28	8.57	21.64	10.82	3.27	6.55	17.93	8.97
4.0m	4.60	9.20	24.62	12.31	3.36	6.71	19.80	9.90
5.0m	4.66	9.33	27.47	13.74	3.25	6.49	18.42	9.21

Room lens

SPACING TABLE								
Mounting Height	0.5 lux				1 lux			
2.5m	5.89	11.78	12.07	6.04	5.49	10.97	10.97	5.49
3.0m	6.90	13.80	13.80	6.90	6.29	12.58	12.58	6.29
4.0m	8.58	17.16	16.77	8.39	7.68	15.37	14.73	7.37
5.0m	10.03	20.06	19.63	9.81	8.32	16.64	16.00	8.00

DOME

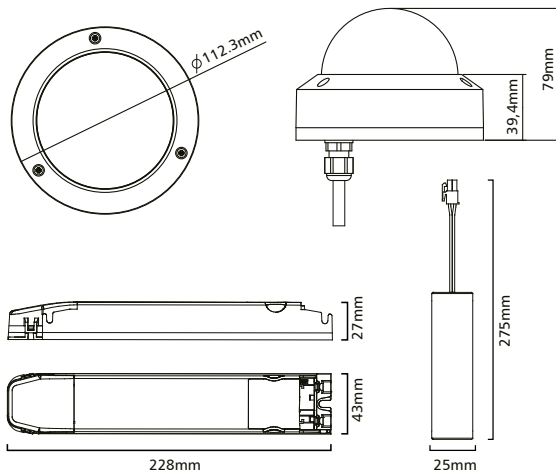


2025 H1 January to June

PRODUCT RANGE (WHITE)		
ORDER CODE	PRODUCT NUMBER	SKU
EK-DOME-SM-HEAD		
Ledfire Dome Vandal Resistant Head IP65 White	6971103538469	53846

PRODUCT RANGE (BLACK)		
ORDER CODE	PRODUCT NUMBER	SKU
EK-DOME-SM-B-HEAD		
Ledfire Dome Vandal Resistant Head IP65 Black	6971103538476	53847

LINE DRAWINGS



MECHANICAL

Body Material	Polycarbonate & AL
Fitting Colour	White/Black
Mounting Type	Recessed mount
IP Rating	IP65
IK Rating	IK10

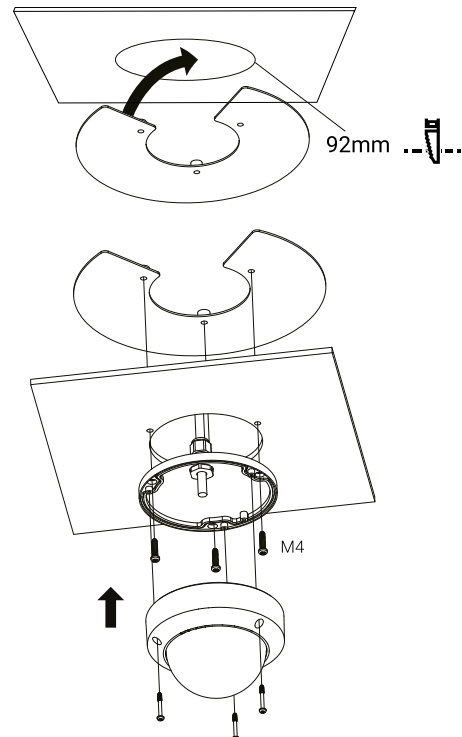
ELECTRICAL

Voltage	220-240V~
lin	< 0.1A
Frequency	50/60Hz
Ambient Temperature	0-40°C
Class	III
Emergency Duration	180min
Battery Code	zc-batt-2B1-AAA
Battery Type	LiFePO ₄ 6.4V 3000mAh 19.2Wh
Battery Supply Current	586mA
Charging Time	16h
Charging Operation	Multi state
Charging Type	CC / CV
Battery service life	5 Years
Wiring	4 Core Free End
CCT	6500k
Max power consumption	2.5W
Average power consumption	<0.5W
Emergency Lm:	Room lens 308 / Corridor lens 300

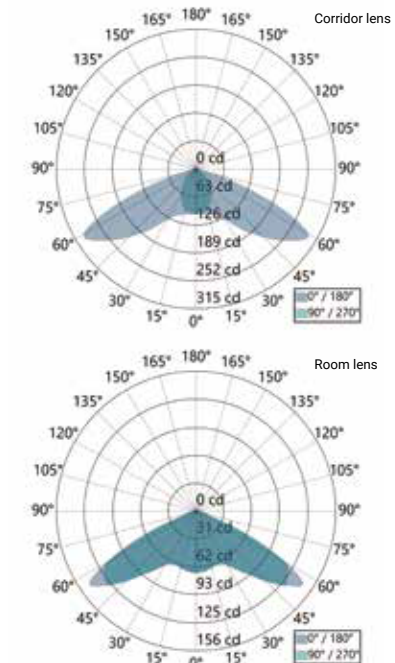
RELEVANT STANDARDS

-	IEC 60598-1
-	IEC 60598-2-22
-	BS 5266-1
-	EN 62034
-	IEC 62386
-	EN 1838

DIMENSIONS



LUMINOUS INTENSITY DISTRIBUTION DIAGRAM



Corridor lens

SPACING TABLE								
Mounting Height	0.5 lux				1 lux			
2.5m	6.87	13.74	7.28	3.64	6.19	12.38	6.17	3.09
3.0m	7.82	15.63	8.11	4.05	6.90	13.80	6.66	3.33
4.0m	9.42	18.85	9.20	4.60	8.39	16.77	7.20	3.60
5.0m	10.97	21.94	9.83	4.91	9.40	18.81	7.54	3.77

Room lens

SPACING TABLE								
Mounting Height	0.5 lux				1 lux			
2.5m	5.36	10.72	11.23	5.62	4.80	9.60	10.03	5.01
3.0m	6.02	12.03	12.87	6.43	5.41	10.82	11.28	5.64
4.0m	7.37	14.73	15.37	7.68	6.53	13.05	13.05	6.53
5.0m	8.49	16.98	17.32	8.66	7.41	14.83	13.76	6.88



The Twinspot (pictured) with powerful dual floodlights and an IP65 rating, is perfect for indoor or outdoor use. Available in black or white and suitable for applications where traditional fittings are difficult to mount. The Twinspot features two moveable heads, allowing light to be directed where it's needed most.

DUO/TWINSPOT

FEATURES



WEATHERPROOF

For those more demanding environments, the Twinspot provides levels of protection against dust and harsh weather.



LITHIUM BATTERIES

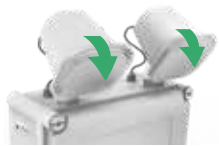
All Twinspots use quality Lithium LiFePO₄ batteries. These are environmentally friendly and allow for maximum charging efficiency.



LYNK

Connect emergency products into a wireless mesh for simpler and easier emergency testing and monitoring.*

MOVEMENT



DOWNWARD MOVEMENT

Up to 40-degree headlight downward range of movement.



SIDEWAYS MOVEMENT

Up to 45-degree headlight sideways movement.



UPWARD MOVEMENT

Up to 40-degree headlight upward range of movement.

* Available on selected models

DUO



LYNK

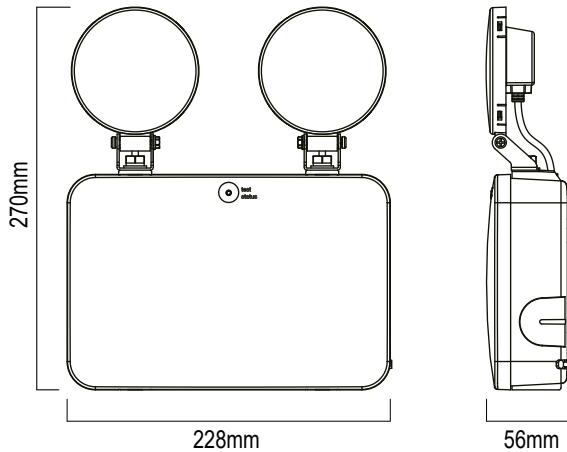


2025 H1 January to June

PRODUCT RANGE (WHITE)		
ORDER CODE	PRODUCT NUMBER	SKU
EK-DUO-IP65-ST Duo Surface/Wall Mounted Twin Spot Emergency IP65 3 Hours Self Test White	6971103535994	53599
EK-DUO-IP65-DA Duo Surface/Wall Mounted Twin Spot Emergency IP65 3 Hours DALI White	6971103536014	53601
EK-DUO-IP65-LK Duo Surface/Wall Mounted Twin Spot Emergency IP65 3 Hours Wireless White	6971103536038	53603

PRODUCT RANGE (BLACK)		
ORDER CODE	PRODUCT NUMBER	SKU
EK-DUO-IP65-B-ST Duo Surface/Wall Mounted Twin Spot Emergency IP65 3 Hours Self Test Black	6971103536007	53600
EK-DUO-IP65-B-DA Duo Surface/Wall Mounted Twin Spot Emergency IP65 3 Hours DALI Black	6971103536021	53602
EK-DUO-IP65-B-LK Duo Surface/Wall Mounted Twin Spot Emergency IP65 3 Hours Wireless Black	6971103536045	53604

LINE DRAWINGS



MECHANICAL

Body Material	Polycarbonate
Fitting Colour	White/Black
Mounting Type	Wall mount
IP Rating	IP65

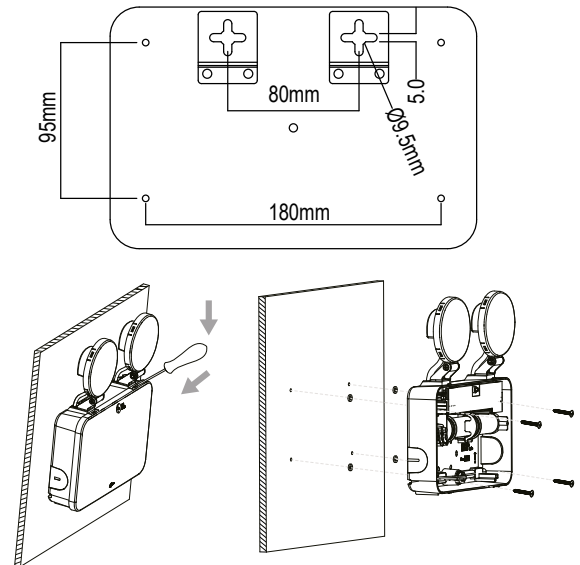
ELECTRICAL

Voltage	220-240V~
I _{in}	< 0.01A
Frequency	50/60Hz
Ambient Temperature	0-40°C
Class	II
Emergency Duration	180min
Battery Code	zc-batt-1B1-ACA
Battery Type	LiFePO ₄ 3.2V 3400mAh 10.88Wh
Battery Supply Current	250mA
Charging Time	24h
Charging Operation	Multi state
Charging Type	CC / CV
Battery service life	5 Years
Wiring	Push Terminal block (0.5-2.5mm ² □)
CCT	6500k
Max power consumption	2.5W
Average power consumption	0.6W
Emergency Lm:	130x2

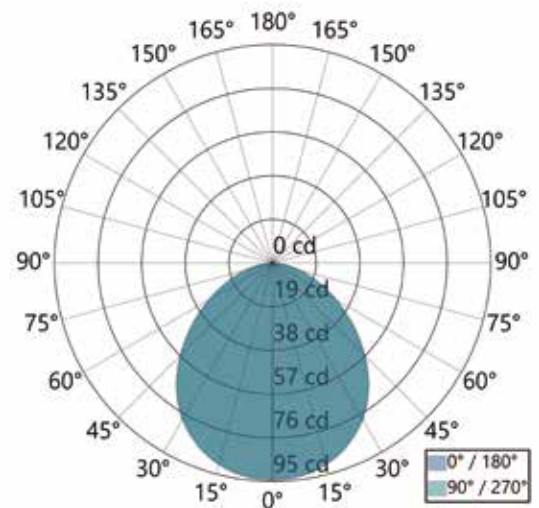
RELEVANT STANDARDS

-	IEC 60598-1
-	IEC 60598-2-22
-	BS 5266-1
-	EN 62034
-	IEC 62386
-	EN 1838

DIMENSIONS



LUMINOUS INTENSITY DISTRIBUTION DIAGRAM



TWINSPOT PRO HP



2025 H1 January to June

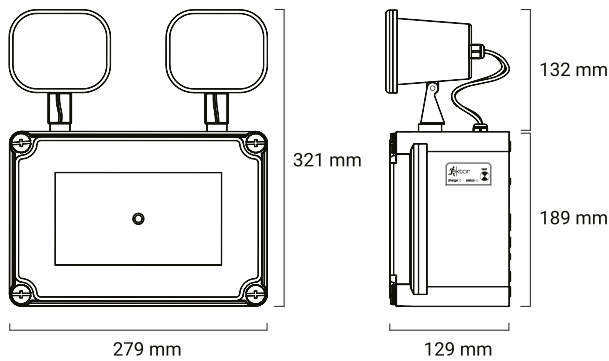
PRODUCT RANGE (WHITE)

ORDER CODE	PRODUCT NUMBER	SKU
EK-TWINSPOT-PRO-HP-IP65-DA Twinspot Surface/Wall Mounted Twin Spot Emergency IP65 3 Hours DALI White	6971103537844	53784
EK-TWINSPOT-PRO-HP-IP65-LK Twinspot Surface/Wall Mounted Twin Spot Emergency IP65 3 Hours Wireless White	6971103537868	53786

PRODUCT RANGE (BLACK)

ORDER CODE	PRODUCT NUMBER	SKU
EK-TWINSPOT-PRO-HP-IP65-B-DA Twinspot Surface/Wall Mounted Twin Spot Emergency IP65 3 Hours DALI Black	6971103537851	53785
EK-TWINSPOT-PRO-HP-IP65-B-LK Twinspot Surface/Wall Mounted Twin Spot Emergency IP65 3 Hours Wireless Black	6971103537875	53787

LINE DRAWINGS



MECHANICAL

Body Material	Polycarbonate
Fitting Colour	White/Black
Mounting Type	Wall mount
IP Rating	IP65

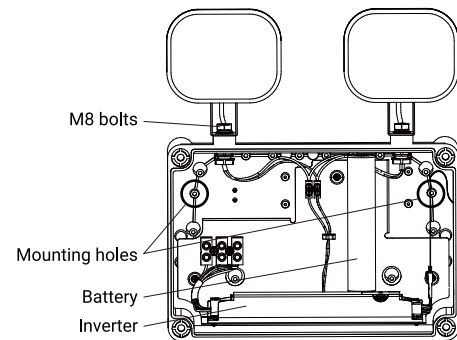
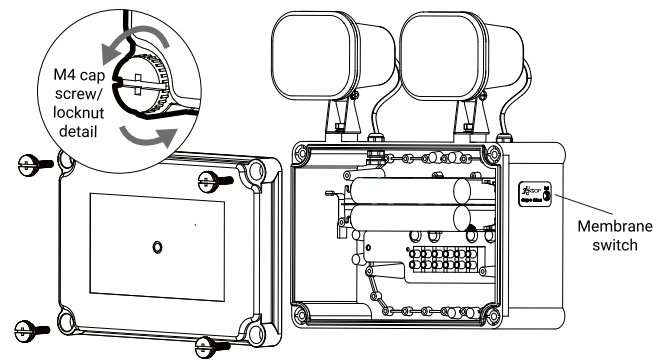
ELECTRICAL

Voltage	220-240V~
Iin	< 0.04A
Frequency	50/60Hz
Ambient Temperature	0-40°C
Class	I
Emergency Duration	180min
Battery Code	zc-batt-2B1-AAA x2
Battery Type	LiFePO ₄ 6.4V 3000mAh 19.2Wh
Battery Supply Current	650mA x2
Charging Time	24h
Charging Operation	Multi state
Charging Type	CC / CV
Battery service life	5 Years
Wiring	Terminal block (0.5-6.0mm ² □)
CCT	6500k
Max power consumption	<3.5W
Average power consumption	<2.0W
Emergency Lm:	500 x2

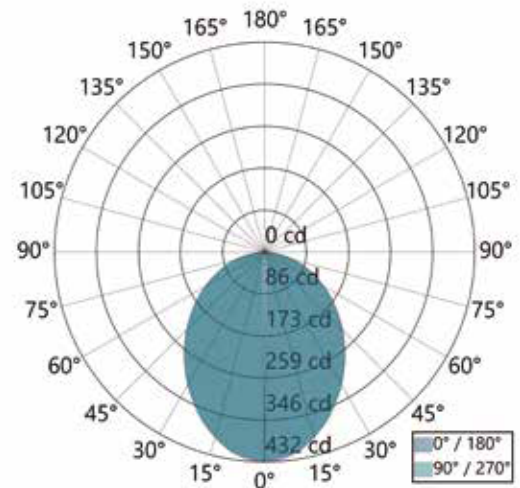
RELEVANT STANDARDS

-	IEC 60598-1
-	IEC 60598-2-22
-	BS 5266-1
-	EN 62034
-	IEC 62386
-	EN 1838

DIMENSIONS



LUMINOUS INTENSITY DISTRIBUTION DIAGRAM





Sturdy IK08 square bulkhead (pictured) with IP65 weatherproof rating, tri-color control and corridor function is a safe choice. Emergency and non-emergency models available, with or without sensor.

QUADRO

FEATURES



SELF TEST

Reduce ongoing site time and costs by automating easy testing with this smart emergency.



CORRIDOR MODE

Corridor mode, optimised for use in walkways. Available on Advanced and Professional models.



WIRELESS MESH

With zencontrol technology the Quadro will automatically test and sync data to the zencontrol IoT cloud.

OVERVIEW



MICROWAVE MOTION SENSORS

Optimise and save energy with your lights. Both emergency and non-emergency models come with a sensor option.



COLOUR CHANGE OPTIONS

Advanced models are available in tri-colour. Professional models have colour tuneable white, allowing adjustment for a better working environment.



WEATHERPROOF RATINGS

For demanding environments, the Quadro provides protection against dust and weather with a IP65 rating and impact with an IK08 rating.

QUADRO PRO IP65



LYNK

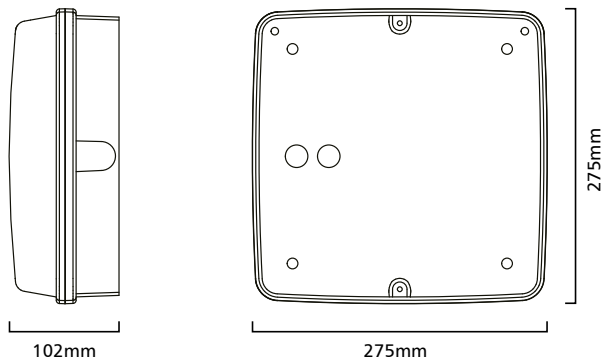


2025 H1 January to June

PRODUCT RANGE		
ORDER CODE	PRODUCT NUMBER	SKU
EK-QUADRO-PRO-IP65 Quadro Ceiling Mounted Luminaire IP65 Dali DT8 White	6971103536380	53638
EK-QUADRO-PRO-IP65-S Quadro Ceiling Mounted Luminaire IP65 Dali DT8 White Microwave Sensor	6971103536397	53639
EK-QUADRO-PRO-EM-IP65 Quadro Ceiling Mounted Emergency Luminaire IP65 3 Hours Dali DT8 White	6971103534171	53417
EK-QUADRO-PRO-EM-IP65-S Quadro Ceiling Mounted Emergency Luminaire IP65 3 Hours Dali DT8 White Microwave Sensor	6971103536434	53643

PRODUCT RANGE		
ORDER CODE	PRODUCT NUMBER	SKU
EK-QUADRO-PRO-IP65-LK Quadro Ceiling Mounted Luminaire IP65 Wireless White	6971103536403	53640
EK-QUADRO-PRO-IP65-LK-S Quadro Ceiling Mounted Luminaire IP65 Wireless White Microwave Sensor	6971103536410	53641
EK-QUADRO-PRO-EM-IP65-LK Quadro Ceiling Mounted Emergency Luminaire IP65 3 Hours Wireless White	6971103535581	53558
EK-QUADRO-PRO-EM-IP65-LK-S Quadro Ceiling Mounted Emergency Luminaire IP65 3 Hours Wireless White Microwave Sensor	6971103536458	53645

LINE DRAWINGS

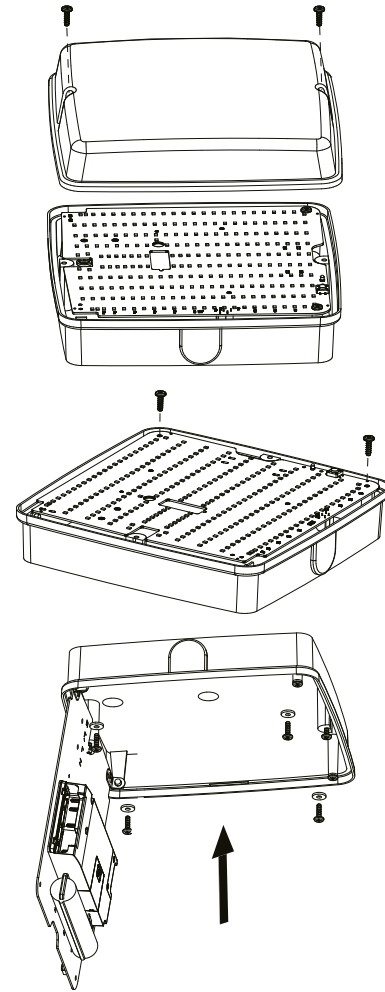


MECHANICAL

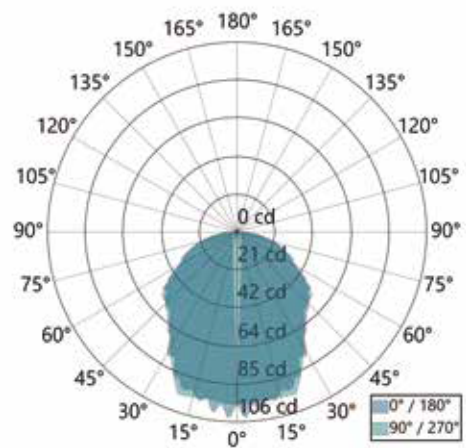
Body Material	Polycarbonate
Fitting Colour	White
Mounting Type	Surface mount
IP Rating	IP65

ELECTRICAL	NO EM	EM
Voltage	220-240V~	220-240V~
Iin	< 0.13A	< 0.13A
Frequency	50/60Hz	50/60Hz
Ambient Temperature	0-40°C	0-40°C
Class	II	II
Emergency Duration	\	180min
Battery Code	\	zc-batt-2B1-AAA
Battery Type	\	LiFePO ₄ 6.4V 3000mAh 19.2Wh
Battery Supply Current	\	250mA
Charging Time	\	16h
Charging Operation	\	Multi state
Charging Type	\	CC / CV
Battery service life	\	5 Years
Wiring	Terminal block (0.5-6.0mm ² □)	
CCT	\	Adjustable (DALI)
Maintained max power consumption	26.5W	2.65W
Maintained average power consumption	24W	24W
Non-Maintained max power consumption	2W	2W
Non-Maintained average power consumption	0.5W	0.5W
Lm:	2279 @ 3000K	CCT _(AC)
Lm:	2374 @ 4000K	CCT _(AC)
Lm:	2352 @ 6000K	CCT _(AC)
Emergency Lm:	280 @ 6000K	

DIMENSIONS



LUMINOUS INTENSITY DISTRIBUTION DIAGRAM



RELEVANT STANDARDS

- IEC 60598-1
- IEC 60598-2-22
- BS 5266-1
- EN 62034
- IEC 62386
- EN 1838

EMERGENCY TIMER

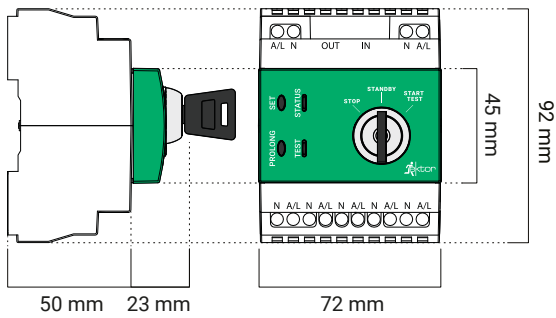


2025 H1 January to June

PRODUCT RANGE		
ORDER CODE	PRODUCT NUMBER	SKU
EK-EMERGENCY-TIMER Emergency Test Switch	6971103538537	53853

PRODUCT RANGE		
ORDER CODE	PRODUCT NUMBER	SKU
EK-EMERGENCY-TIMER-BASIC Emergency Test Switch Basic	6971103538841	53884

LINE DRAWINGS



MECHANICAL

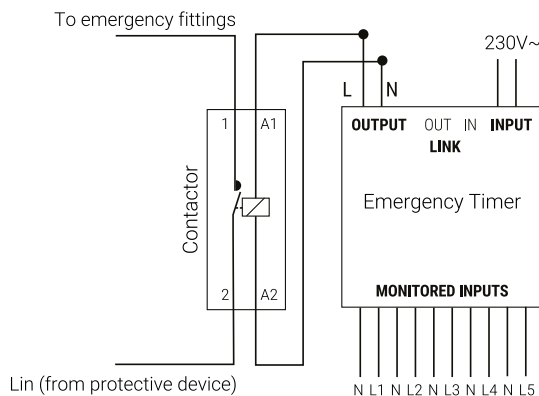
Body Material	Polycarbonate
Fitting Colour	White/Green
Mounting Type	DIN Rail (35mm)
IP Rating	IP20

ELECTRICAL

Voltage	220-240V~
I _{in}	< 0.02A
Frequency	50/60Hz
Ambient Temperature	0-40°C
Class	II
Wiring	Terminal block (0.5-6.0mm ² □)

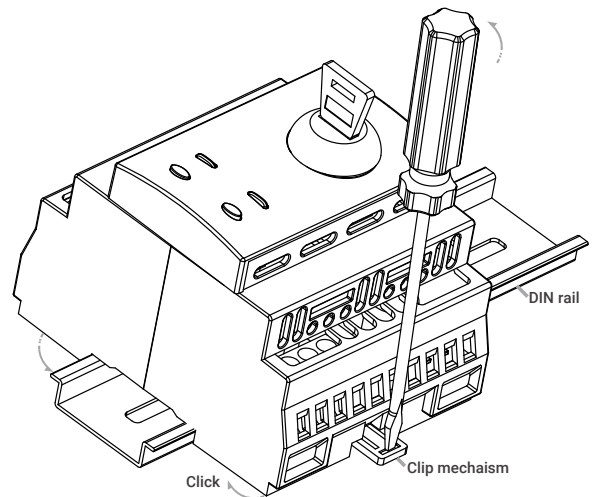
WIRE DIAGRAM

The Emergency Test Switch is designed to be used with a Normally Closed (NC) contactor (**NOT PROVIDED**). Recommended contactors are CLIPSAL 4CNT1/1NC or HAGER ESC227



This product is not designed to be used without a suitable NC contactor.

DIMENSIONS



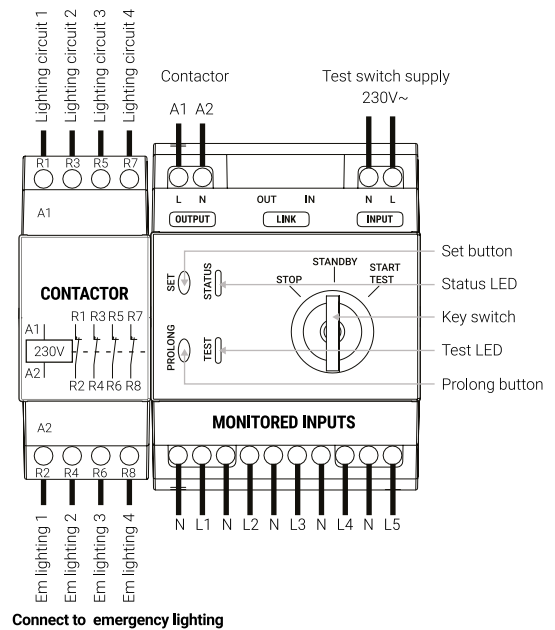
WIRE DIAGRAM(BASIC)

The Emergency Test Switch is designed to be used with a Normally Closed (NC) contactor.

Ensure emergency circuits power fittings are in the same area as the matching regular lighting circuit. Join each emergency circuit neutral to earth lighting circuit neutral separately.

Monitored wiring is only used within centrally supplied systems

Connect to regular lighting after MCB/RCD



AWAC-2

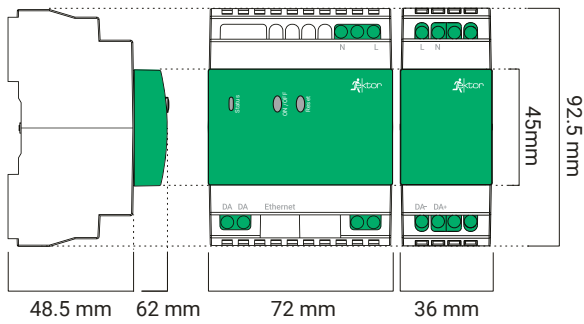


2025 H1 January to June

PRODUCT RANGE

ORDER CODE	PRODUCT NUMBER	SKU
EK-AWAC-2-KIT Advanced Wired Application Controller, Ethernet DALI gateway with power supply	6971103538544	53854

LINE DRAWINGS



MECHANICAL

Body Material	Polycarbonate
Fitting Colour	White/Green
Mounting Type	DIN Rail (35mm)
IP Rating	IP20

CONTROLLER OPERATIONAL INFORMATION

Voltage	220-240V~
Frequency	50/60Hz
Control system	DALI-2
DALI line current	2 mA
Ethernet	10 / 100 TCP / IP Ethernet
Ambient temp.	0 - 40°C
Class	II
Wiring	1 - 4mm ² Strip 6 - 7 mm

POWER SUPPLY OPERATIONAL INFORMATION

Voltage	220-240V~
Frequency	50/60Hz
Control system	DALI-2
Guaranteed supply current	235 mA
Maximum supply current	250 mA
DALI voltage	16.5 V nominal line voltage
Ambient temp.	0 - 45°C
Class	II
Wiring	1 - 4mm ² Strip 6 - 7 mm

RELEVANT STANDARDS

-	IEC 61347-2-11
-	IEC 60950-1
-	IEC 62386-103
-	EN 55015
-	EN 55022
-	CISPR 15
-	CISPR 22

LYNK GATEWAY

LYNK

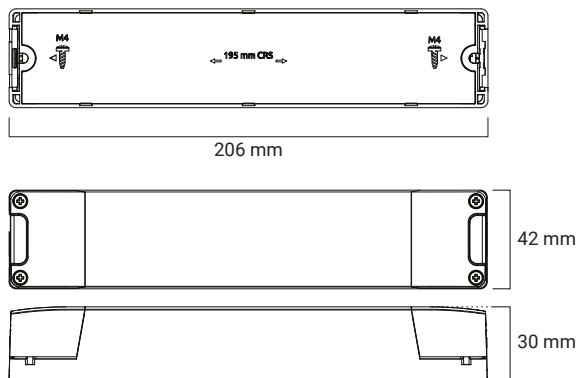


2025 H1 January to June

PRODUCT RANGE

ORDER CODE	PRODUCT NUMBER	SKU
EK-GATEWAY-LK Ektor LYNK Gateway, Wireless Application Controller	6971103538551	53855

LINE DRAWINGS



MECHANICAL

Body Material	Polycarbonate
Fitting Colour	White
Mounting Type	Field mount
IP Rating	IP20

CONTROLLER OPERATIONAL INFORMATION

Voltage	220-240V~
Frequency	50/60Hz
Control system	DALI-2
DALI line current	2 mA
Ethernet	10 / 100 TCP / IP Ethernet
Ambient temp.	0 - 40°C
Max radio tx power	+8 dBm
Class	II
Wiring	1 - 4mm ² Strip 6 - 7 mm

RELEVANT STANDARDS

-	IEC 61347-2-11
-	IEC 60950-1
-	IEC 62386-103
-	IEC 62386-104
-	EN 55015
-	EN 55022

BATTERY

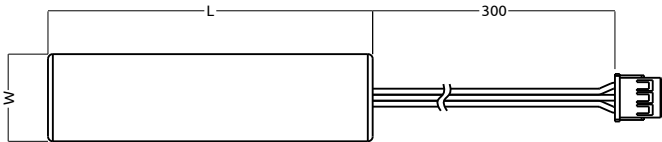
2025 H1 January to June



PRODUCT RANGE	
ORDER CODE	DESCRIPTION
1A2-AEA	Battery 1A2-AEA LiFeP04 3.2V >3000mAh Stick 1S2P with NTC
1A3-AEA	Battery 1A3-AEA LiFeP04 3.2V >4500mAh Stick 1S3P with NTC
1A4-AEA	Battery 1A3-AEA LiFeP04 3.2V >6000mAh Stick 1S3P with NTC
1A5-AEA	Battery 1A3-AEA LiFeP04 3.2V >7500mAh Stick 1S3P with NTC
1A6-AEA	Battery 1A3-AEA LiFeP04 3.2V >9000mAh Stick 1S3P with NTC

FEATURES
■ NTC Resistor 10k @25°C ,3950B.
■ 3pole connector.

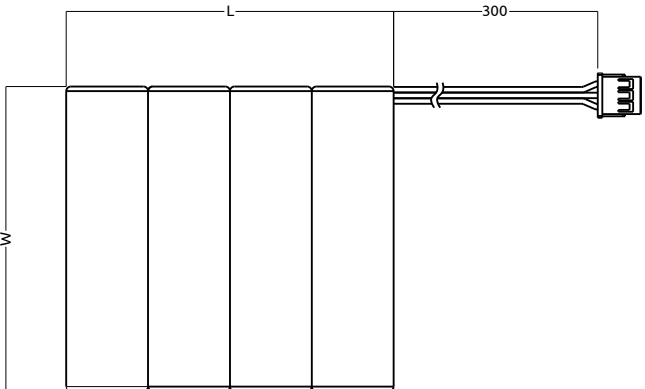
DIMENSIONS	
Mounting options	Push Terminal block
Dimensions	W 18.5 / L 132 mm(1A2-AEA)
	W 18.5 / L 197 mm(1A3-AEA)
	W 18.5 / L 262 mm(1A4-AEA)
	W 18.5 / L 327 mm(1A5-AEA)
	W 18.5 / L 392 mm(1A6-AEA)



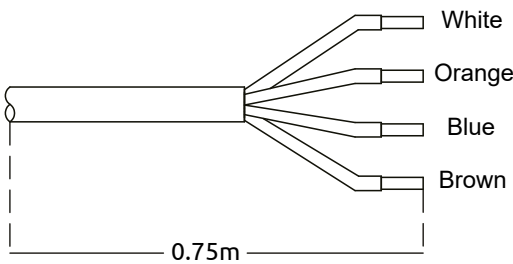
PRODUCT RANGE	
ORDER CODE	DESCRIPTION
1A2-AEB	Battery 1A2-AEB LiFeP04 3.2V >3000mAh Stick 1S2P with NTC
1A3-AEB	Battery 1A3-AEB LiFeP04 3.2V >4500mAh Stick 1S3P with NTC
1A4-AEB	Battery 1A3-AEB LiFeP04 3.2V >6000mAh Stick 1S3P with NTC
1A5-AEB	Battery 1A3-AEB LiFeP04 3.2V >7500mAh Stick 1S3P with NTC
1A6-AEB	Battery 1A3-AEB LiFeP04 3.2V >9000mAh Stick 1S3P with NTC

FEATURES
■ NTC Resistor 10k @25°C ,3950B.
■ 3pole connector.

DIMENSIONS	
Mounting options	Push Terminal block
Dimensions	W 67 / L 37 mm(1A2-AEA)
	W 67 / L 55 mm(1A2-AEA)
	W 67 / L 73 mm(1A2-AEA)
	W 67 / L 91 mm(1A2-AEA)
	W 67 / L 109 mm(1A2-AEA)

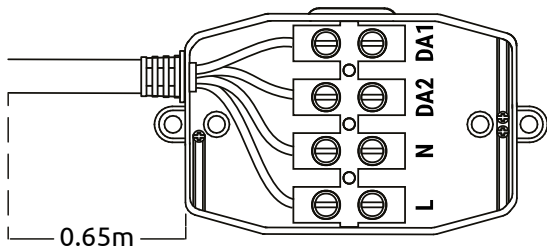


ACCESSORIES



PRODUCT RANGE	
ORDER CODE	DESCRIPTION
EK-LED FIRE-*	LED FIRE series will ship with 4 core cable as default
EK-SLIM FIRE-*	SLIM FIRE series will ship with 4 core cable as default
EK-RAZOR-*	RAZOR series will ship with 4 core cable as default, Excluding the SM-* Series.

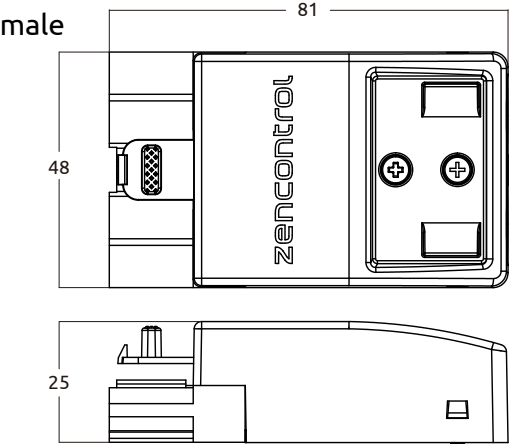
FEATURES
■ 4 Core Cable
■ Low Smoke and Hologen Free
Live = Brown, Neutral = Blue, DALI + = Orange, DALI- = White
With Bootlaces



PRODUCT RANGE	
ORDER CODE	DESCRIPTION
EK-LED FIRE-*	LED FIRE series can ship with a 4 core junction box - contact salesfor more information.
EK-SLIM FIRE-*	SLIM FIRE series can ship with a 4 core junction box - contact salesfor more information.
EK-RAZOR-*	RAZOR series can ship with a 4 core junction box - contact salesfor more information. Excluding the SM-* Series.

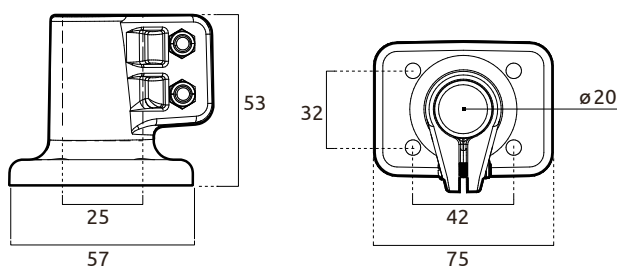
FEATURES
■ 4 Pole 16mm2 Terminal block
■ Low Smoke and Hologen Free
Live = Brown, Neutral = Blue, DALI + = Orange, DALI- = White

ACCESSORIES



PRODUCT RANGE	
ORDER CODE	DESCRIPTION
EK-LEDFIRE-*	LEDFIRE series can ship with zc-plug-male-d5w
EK-SLIMFIRE-*	SLIMFIRE series can ship with zc-plug-male-d5w
EK-RAZOR-*	RAZOR series can ship with zc-plug-male-d5w, Excluding the SM-* Series.

FEATURES
■ 5 Pole Wieland DALI compatible plug



PRODUCT RANGE	
ORDER CODE	DESCRIPTION
EK-MERCURY-*	MERCURY Series Rod mount kit,to be used with smart sensor surface mount kit
EK-LEDFIRE-*	LEDFIRE Series Rod mount kit,to be used with smart sensor surface mount kit
EK-QUADRO-*	QUADRO Series Rod mount kit,to be used with smart sensor surface mount kit
EK-ALECTIS-IP65-*	ALECTIS Series Rod mount kit,to be used with smart sensor surface mount kit

FEATURES
■ Allow for 20mm Conduit mounting from ceiling.
■ Maximum of 8kg loading

STATUS INDICATORS





Status LED

The status LED in emergency lighting systems serves as a local indicator, providing real-time visual feedback about the condition of the lighting product or any potential faults. This component emits different colors and patterns to signify various statuses, such as green for normal operation, flashing red for various faults. It aids in immediate identification of issues, enabling prompt maintenance and ensuring the reliability of emergency lighting during critical situations.

Test Switch

The test switch (where fitted) in ektor emergency lighting products is a versatile component that allows users to set the lighting into various modes for diagnostic purposes. This switch enables the activation of 'duration test', during which the emergency lighting's performance and battery backup are evaluated. Additionally, it provides a means to check the status of the lamp by enabling a 'function test', verifying its functionality and readiness for emergency situations.

STATUS LED

Status	Indication pattern
Normal Mode The device is operational with no known faults and the battery is full.	
Battery Charge The device's battery is not ready for a Duration test and the battery may not be able to complete the full duration that is specified by the product, this maybe because of a recent self test or power loss event. Otherwise the product is functional.	
Battery disconnect The battery has been removed or is failed to be detected. Check the battery connection and check if the issue persists. If the battery has been damaged, replace with a new battery with the same labeled part number. If concerned please contact your local distributor for battery information.	
Lamp failed Fast flashing indicates that the lamp has failed to light up during test or is unable to be turned on during normal operation. Check the connections to the LED board or verify the lamp is able to be powered. If the lamp is broken contact your local distributor for a replacement lamp.	

TEST SWITCH

Press	Description (Function)
1 Press	Sets device type 1 (DT1) physically selection flag
3 Press	Reset random self-test delay time (173-300 days) and start Duration Test (DT)
7 press	Start Function Test (FT)
9 press	Reset random self-test delay time (173-300 days) (If self-test is enabled and no DALI connection)
11 press (x2)	Sets device mode back to default (SPU)
13 press	Cancel pending Duration Test (DT) & System reboot

AC Cycle Number	Function	LED Action	LED Action Visual	Notes
2 Cycle	Check Mode / Check last result	Selftest = Latest Status (1s flashrate)		Loops for 15 minutes allowing visual check of Status
3 Cycles	Activate Self Test and start immediate duration test	3 x Red Flash (0.25s flashrate)		Loops for 15 minutes allowing visual check of Status
5 Cycle	Activate Self Test (no Duration Test)	5 x Red Flash (0.25s flashrate)		Loops for 15 minutes allowing visual check of Status
7 Cycle	Turn off self test	7 x Red Flash (0.25s flashrate)		Loops for 15 minutes allowing visual check of Status

TEST SWITCH PRESSES

Test switches is located on each of the Emergency luminaires in different locations - but the functionality will remain the same for the product. A press is roughly 0.2 seconds on and 0.2 seconds off, or up to a max of 3 a second.















BASE LEVEL

Button Press	Function	LED Action	LED Action Visual	Notes
Hold <4sec	Start Function Test	See General Status Table		Does not alter the schedule for the six-month synchronised test
Hold <4sec	Emergency test mode			
Hold >10sec	If in Standby- Duration Test	See General Status Table		Does not alter the schedule for the six-month synchronised test
Hold >10sec	If in Duration Test- Exit Duration Test			
2 press(<2 sec)	Check Mode / Check last result	Latest Status = Selftest		Loops for 20 seconds allowing visual check of Status Self test will report device General Status Standalone will single flash Red
3press (<2 sec)	Clear Led Flash	Attempt to go to normal mode or Error		Changed because of feeling of the button presses. The device used to be confusing when a single press would start a test.
1 press (>4 sec)	Enter Settings Mode (Level 1)			5 second entrance / 5 second timeout

LEVEL 1

Button Press	Function	LED Action	LED Action Visual	Notes
1 press (>4 sec)	Enter Settings Mode Level 2 (Reserved for Future use) (See below settings mode press Level 2)			5 second entrance / 5 second timeout
3 press	Activate Self Test and start immediate duration test	3 x Red Flash (0.25s flashrate)		Loops for 20 seconds allowing visual check on unit
5 press	Activate Self Test (no Duration Test)	5 x Red Flash (0.25s flashrate)		Loops for 20 seconds allowing visual check on unit
7 press	Turn off self test	7 x Red Flash (0.25s flashrate)		Loops for 20 seconds allowing visual check on unit
9 press	Clear test result	9 x Red Flash (0.25s flashrate)		Loops for 20 seconds allowing visual check on unit
17 press	Toggle Maintained / Non-Maintained	7 x Red Flash (0.25s flashrate)		Loops for 20 seconds allowing visual check on unit

GENERAL LED STATUS

Function	LED action	LED action Visual	Notes
Emergency Mode / No Power	All OFF		
Battery Charging	Green on 4s off 1s		Topping up the battery does not trigger this LED state. Top up is where the battery is full and has drifted a little lower then requires the top up.
OK	Green		Everything is normal
Function Test	Green Flash (0.5s flashrate)		Function test is active
Duration Test	Red (2.5s flashrate)		Duration test is active
Duration Test Pass	Red on 4s Green on 1s		Device goes back to Normal mode.
Lamp Failure	Red and Green (0.5s flashrate)		Lamp has a short circuit / open circuit condition.
Battery Failure	Red (0.5s flashrate)		Battery has failed or is missing.
System Failure/ Timer Failure / Config Failure/ DT/FT Failure	Red (0.25s flashrate)		A failure of some kind.
No Duration Test Result (untested / test interrupted)	Slow Green Flash (1s flashrate)		No duration test record, recorded.
Duration Test Pending	1 x Green (0.25s flashrate)		Battery is not currently full and the test is awaiting to start.
Configuration Change (Pass)	2 x Green (0.25s flashrate)		Accepting a configuration change, this could include a new emergency power, or a battery type change or some other core config change in the field
DALI System Failure DALI	4 x Green (0.25s flashrate)		DALI voltage missing after obtaining a DALI short address
DALI missing Short Address	5 x Green (0.25s flashrate)		DALI voltage present and missing a DALI short address.

Notes

Notes



Market hall





Zencontrol Limited

Flat A, 15/F Hillier Commercial Building
65-67 Bonham Strand East Sheung Wan
Hong Kong

2025 H1 January to June