

### Features

- DALI application controller
- Compliant to DALI IEC 62386-103 Ed 2.0
- Suitable for one DALI line of up to 64 devices and 63 control devices
- 10 / 100 Ethernet gateway to connect to cloud and extended system
- Suitable for distribution board mounting on standard 35 mm DIN rail
- Automatic DALI scanning for device changes
- Automatic DALI short addressing



### DALI device

Fully DALI compliant and compatible



### Over-voltage

Protected against DALI over-voltage conditions



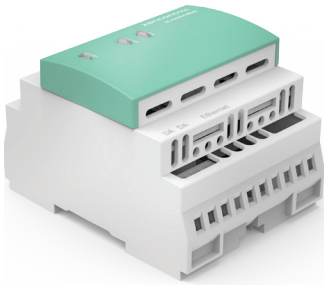
### Extended

Ethernet gateway to connect to cloud and extended system



### Insulated

Reinforced insulation between DALI, mains supply and Ethernet



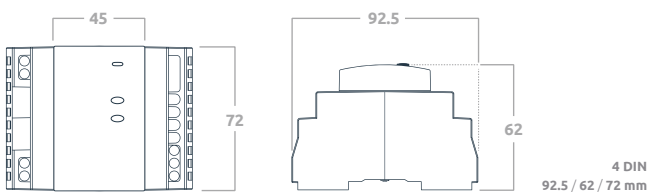
## Product range

Order code	Description
zc-controller	DALI application controller and Ethernet DALI gateway

### Features

- DALI compliant application controller
- Compliant to IEC 62386-103 Ed 2.0
- Compatible with DALI devices
- Protected against DALI over voltage
- LED indicators for system status
- Reinforced insulation between DALI, mains supply and Ethernet
- 10/100 TCP/IP Ethernet compatible w. standard IT switches and equipment
- Suitable for distribution board mounting on standard DIN rail
- Suitable for 1 DALI line of up to 64 devices and 63 control devices

## Dimensions



## Specifications

<b>Supply voltage</b>	230 V ~ 50 Hz
<b>Control system</b>	DALI
<b>DALI line current</b>	2 mA
<b>Ethernet</b>	10/100 TCP/IP Ethernet
<b>Wiring</b>	1 - 4 mm <sup>2</sup> Strip 6 - 7 mm
<b>Operating temperature</b>	0 to 45°C
<b>Material</b>	PC
<b>Classification</b>	Class II
<b>Mounting</b>	DIN rail (35 mm)
<b>Ingress protection</b>	IP20
<b>Compliance standards</b>	IEC 61347-2-11 IEC 60950-1 CISPR 15 CISPR 22 EN 55015 EN 55022 IEC 62386-103 Ed 2.0 EMC-2004/108/EC LVD-2006/95/EC

## Accessories range

Order code	Description
zc-psu	DALI power supply

## Notice

Requires external DALI power supply such as *zc-psu*