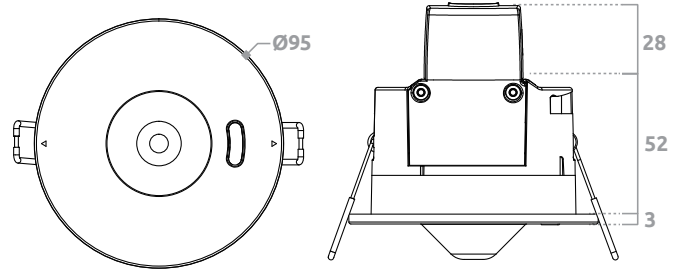


## Dimensions

<b>Mounting</b> (kits sold separately)	Recessed (cut-out min Ø83 mm)
	Wall mount kit (mounting centres 85 mm)
	Surface mount kit
	Rod mount kit
	Conduit mount kit (mounting centres 50-60 mm)
<b>Dimensions</b>	Ø95 / 55 mm



## Product range

Order code	Description
<b>zc-mw-st-1sw-r</b>	Standalone microwave sensor 8 m, with inbuilt relay and one switch

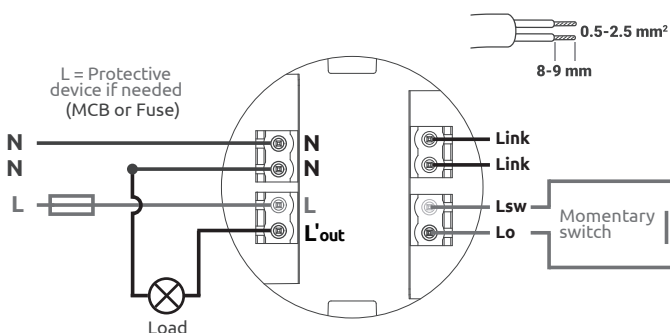
## Specifications

<b>Supply</b>	220 - 240 V ~50 Hz
<b>Supply current</b>	< 0.020 A
<b>Relay output</b> (-r models)	6 A resistive ⚡
<b>Lens</b>	Fresnel
<b>Sensors</b>	PIR, IR, lux
<b>IR</b>	38 kHz
<b>Wiring</b>	2.5 mm <sup>2</sup> cable
<b>Operating temperature</b>	0 - 35°C
<b>Material</b>	PC (body)
<b>Ingress protection</b>	IP54 (front-face only) IP65 (with surface or wall mount kit)

## Accessory range

Order code	Description
<b>zc-smart-wall-kit</b>	Smart sensor wall mount kit
<b>zc-smart-sm-kit</b>	Smart sensor surface mount kit, for surface, rod, conduit mount
<b>zc-rodmount-wht</b>	Rod mount kit, white, for with Smart sensor surface mount kit
<b>zc-ir-ctrl-com</b>	Hand-held infrared control and commissioning unit

## Wiring



## Safety information

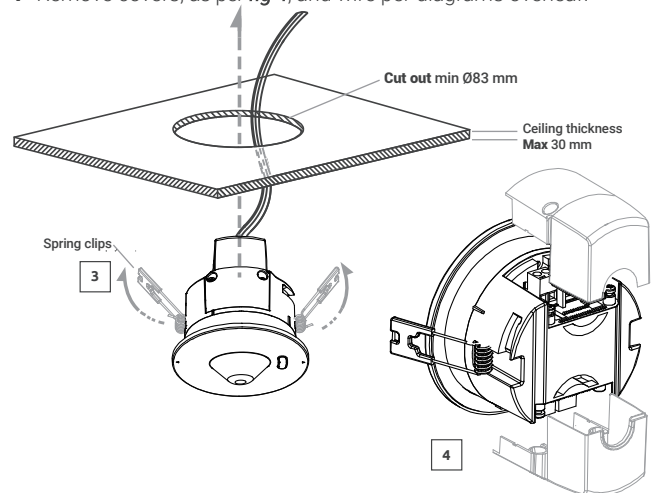
- This product must only be installed by a licensed electrician.
- Before commencing installation turn off and isolate the electrical supply.
- There are no user serviceable parts, attempting to service any part of the product will void the warranty
- As the installer, it is your responsibility to ensure you comply to all relevant building and safety codes. Refer to application standards for the relevant rules.
- When the installation is complete, leave this manual with the building's owner for future reference.

## Installation

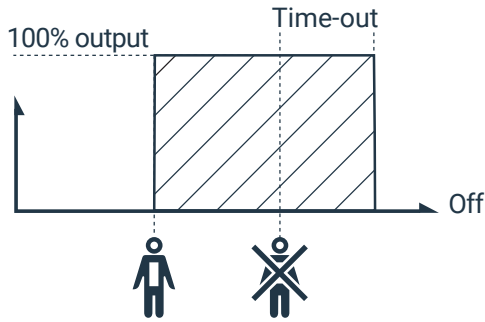
Remove the product from the box and inspect it for any damage. If you believe the product to be damaged or otherwise unsound, **do not** install the product. Please return it to the place of purchase for replacement.

If the product is satisfactory, proceed with the installation:

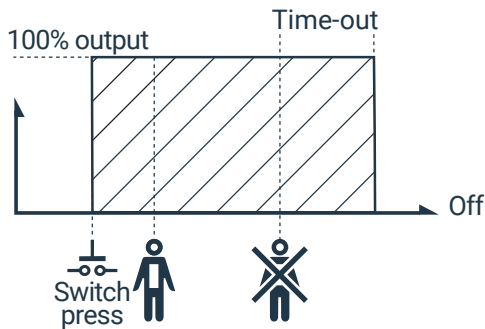
- 1 Choose a location considering the conditions listed in the **detection pattern** section.
- 2 Drill mounting hole in desired position using 83 mm hole saw.
- 3 Push the spring clips in as per **fig 3**. Insert sensor into the desired position and the spring clips will automatically release, ensuring that the sensor is secure and flush up against the ceiling.
- 4 Remove covers, as per **fig 4**, and wire per diagrams overleaf.



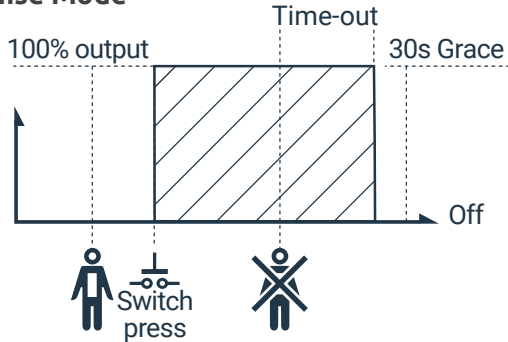
## Presense Mode



## Presense Mode (With Switch)



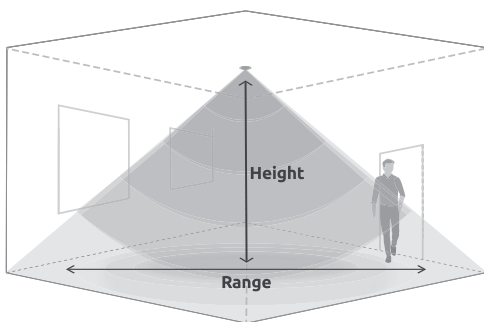
## Absense Mode



## Detection pattern

**Mounting height** 2 - 4 m      **Range ø** 8 m (mounted at 3.0 m)

- The units detection range may alter with changes in ambient temperature.
- Position sensor so that movement occurs across the scan area. Detection range will be reduced when walking directly towards or away from the sensor.
- Do not direct sensor at reflective surfaces or variable heat sources.
- Do not aim sensor directly at the sun, this may cause damage to the PIR sensor.
- When in Absence Mode the product will have a 30 second grace period after the light turns off, where a user may re-trigger the sensor.
- Green LED will flash during detection.
- Red LED will flash on successfully receiving an IR command.



## Programming & default standalone configuration

<b>Sensor mode</b>	Presence mode. The sensor will automatically turn lights on when movement is detected.
<b>Sensor idle-time</b>	14 minutes after the last presence was detected

Refer to IR commissioning, [zic-ir-ctrl-com](http://zic-ir-ctrl-com), datasheet for custom programming via IR. **Note:** [zic-ir-ctrl-com](http://zic-ir-ctrl-com) is sold separately.

## Remote Control description



Symbol	Function	Description
	<b>On</b>	Switches the luminaire on.
	<b>Off</b>	Switches the luminaire off.

### Lux

	<b>Set lux level</b>	When this mode is active, the user may use the up and down arrows to select 5 predetermined lux levels
	<b>Set dusk level</b>	Sets dusk level from current light level. The luminaire will turn on if light level is less than dusk level. while the sensor is on and the ambient lighting becomes too bright the sensor will turn itself off after 10 minutes (even if there is PIR activity)The sensitivity can be adjusted by using the up / down arrows. (While Yellow LED is flashing)
	<b>Disable lux/dusk</b>	Disables lux/dusk mode.

### Wireless

	<b>Walk test</b>	Initiates a 3 Minutes walktest The walk test is indicated by a blue flashing LED and can be stopped by pressing off
	<b>Reset mode</b>	Resets product to defaults

### Sensor

	<b>Absence mode</b>	Absence mode activated. The switch must be turned on when someone enters a room, but the sensor detects when the room is vacated, switching off the lights automatically. The sensitivity can be adjusted with the step up and step down arrows (While white LED is flashing)
	<b>Presence mode</b>	Presence mode activated. The sensor will automatically turn lights on when movement is detected.(Default) The sensitivity can be adjusted with the step up and step down arrows (While white LED is flashing)
	<b>Disable PIR</b>	Disables the PIR sensor.

### General settings

	<b>Reset all</b>	A complete factory reset, clears all settings, including standalone mode settings
--	------------------	---

### Symbol

	<b>Main Timer</b>	The main timer the period of time for the product to remain on.
	<b>Dwell Timer</b>	When entering the dwell timer mode, the product will flash once, (Infinite Timer is not supported)